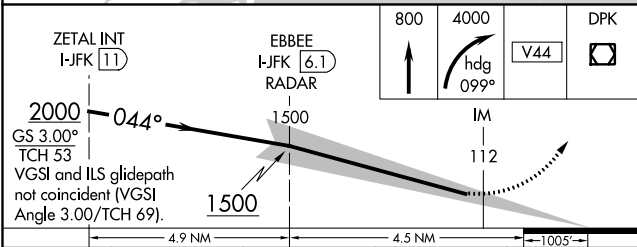
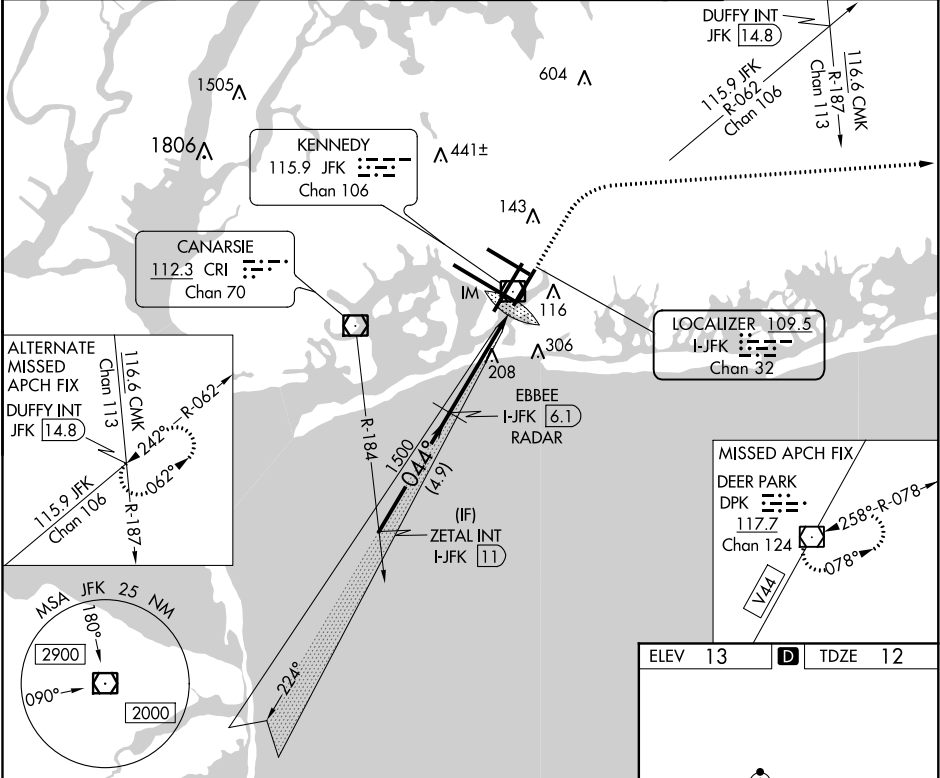


| | | |
|---------------|-------------|-------------|
| LOC/DME I-JFK | APP CRS | Rwy Idg |
| 109.5 | 044° | 8400 |
| Chan 32 | | TDZE 12 |
| | | Apt Elev 13 |

ILS RWY 4R (CAT II & III)
JOHN F KENNEDY INTL (JFK)

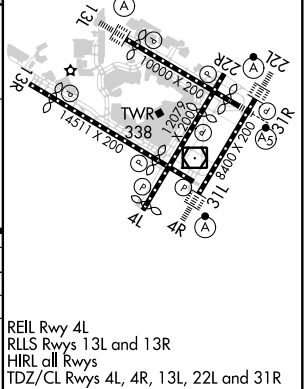
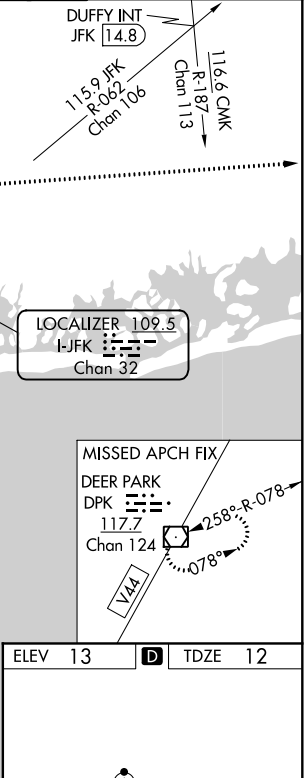
| | | |
|-------------------------------------|---------|--|
| RADAR required for procedure entry. | ALSIF-2 | MISSED APPROACH: Climb to 800 then climbing right turn to 4000 heading 099° and V44 to DPK VOR/DME and hold. |
| Simultaneous approach authorized. | | |

| | | | | | |
|---------------------------------------|----------------------|--|---------------------|---------------|-------|
| D-ATIS (ARR/DEP) (ARR-NE) (ARR-SW) | NEW YORK APP CON | KENNEDY TOWER Rwys 4R/22L and 13L/31R | GND CON | CLNC DEL | CPDLC |
| 128.725 117.7 115.4 | 128.125 269.0 | 119.1 281.55 | 121.9 | 135.05 | |
| | | Rwys 4L/22R and 13R/31L | 123.9 281.55 | 348.6 | |



| | | | | |
|----------|-----------------------------|---|---|---|
| CATEGORY | A | B | C | D |
| S-ILS 4R | CAT II RA 112/12 100 DA 112 | | | |
| S-ILS 4R | CAT III RVR 06 | | | |

CATEGORY II & III ILS - SPECIAL AIRCREW & AIRCRAFT CERTIFICATION REQUIRED



NE-2, 31 DEC 2020 to 28 JAN 2021

NE-2, 31 DEC 2020 to 28 JAN 2021