

APP CRS 343°	Rwy Idg TDZE Apt Elev	N/A N/A 662
------------------------	-----------------------------	--

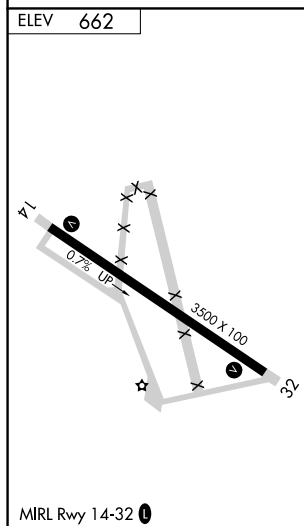
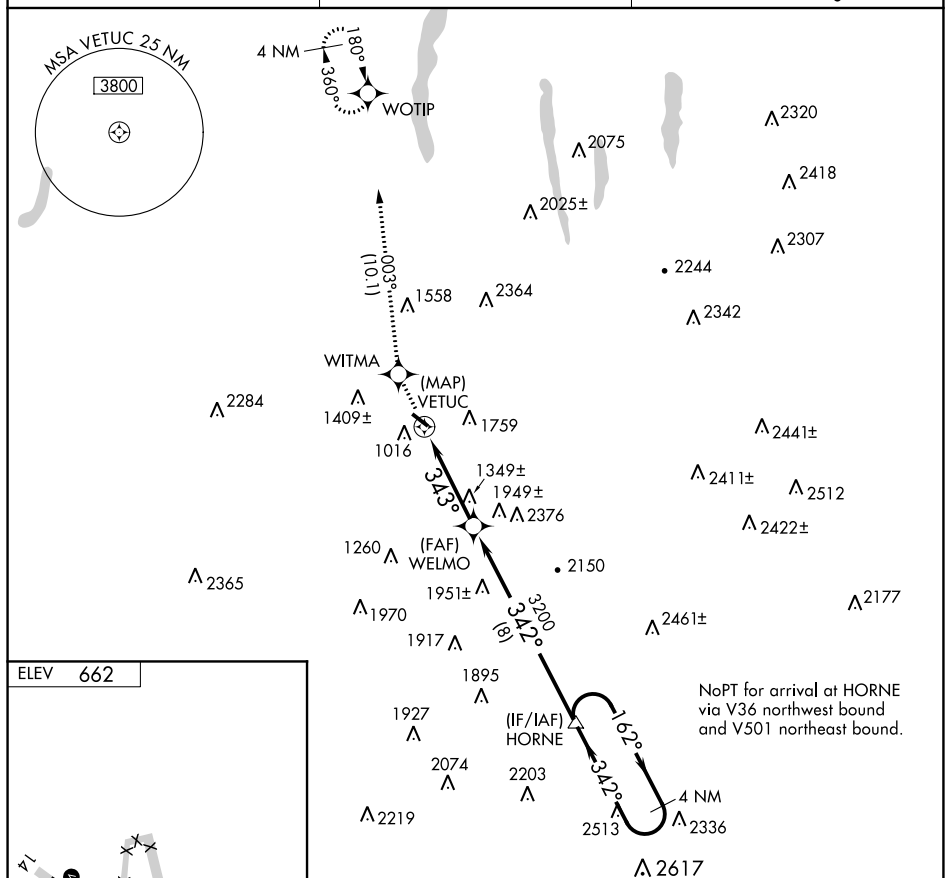
RNAV (GPS)-A
DANVILLE MUNI (DSV)

T	DME/DME RNP-0.3 NA. Procedure NA at night.
A	If local altimeter setting not received, use Greater Rochester Intl altimeter setting and increase all MDAs 100 feet.

MISSED APPROACH: Climb to 3300 direct WITMA and via 003° track to WOTIP and hold.

ASOS
118.325

ROCHESTER APP CON
123.7 322.3

UNICOM
123.0 (CTAF) **L**

<div><div><div>3300</div><div>↑</div></div><div><div>WITMA</div><div></div></div><div><div>WOTIP</div><div></div></div><div><div>tr</div><div>003°</div></div></div> <div><div><div>HORNE</div><div>4 NM Holding Pattern</div></div><div><div>162° →</div><div>← 342°</div><div>3700</div></div><div><div>343°</div><div>342°</div><div>3200</div></div><div><div>VETUC</div><div>WELMO</div></div><div><div>0.3</div><div>4 NM</div><div>8 NM</div></div></div> <tr><td>CATEGORY</td><td colspan="2">A</td><td>B</td><td>C</td><td>D</td></tr> <tr><td>CIRCLING</td><td colspan="2">1960-1¼ 1298 (1300-1¼)</td><td>2120-1½ 1458 (1500-1½)</td><td>2120-3 1458 (1500-3)</td><td>NA</td></tr>					CATEGORY	A		B	C	D	CIRCLING	1960-1¼ 1298 (1300-1¼)		2120-1½ 1458 (1500-1½)	2120-3 1458 (1500-3)	NA
CATEGORY	A		B	C	D											
CIRCLING	1960-1¼ 1298 (1300-1¼)		2120-1½ 1458 (1500-1½)	2120-3 1458 (1500-3)	NA											