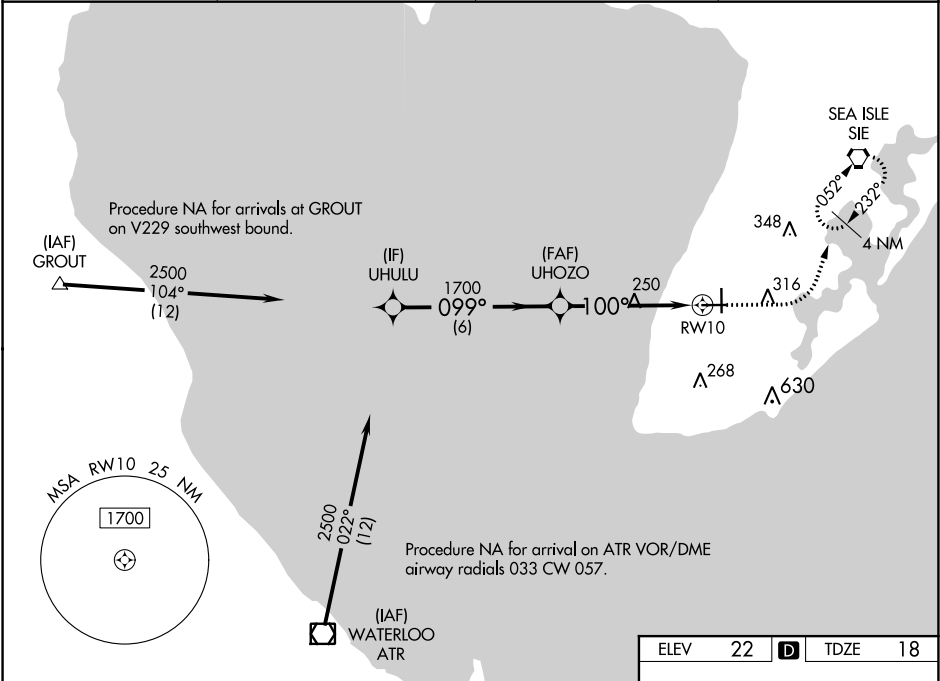


WAAS CH 93541 W10A	APP CRS 100°	Rwy Idg TDZE Apt Elev	4998 18 22
--	------------------------	-----------------------------	---------------------------------------

RNAV (GPS) RWY 10

CAPE MAY COUNTY (WWD)

RNP APCH. ▼ For uncompensated Baro-VNAV systems, LNAV/VNAV NA below -15° C or above 54° C. Circling NA for Cats C and D northeast of Rwy 19 and 28. Rwy 10 helicopter visibility reduction below ¾ SM NA. Circling Rwy 1 NA at night. ▲		MISSED APPROACH: Climb to 500 then climbing left turn to 2000 direct SIE VORTAC and hold.	
AWOS-3PT 118.275	ATLANTIC CITY APP CON 124.6 327.125	CLNC DEL 121.7	UNICOM 122.7 (CTAF) 0



VGSI and RNAV glidepath not coincident (VGSI Angle 3.00/TCH 45).		500	2000	SIE
UHULU		2500	1700	100°
GP 3.00° TCH 56		6 NM	3.7 NM	1.4 NM
RW10		250	100°	
CATEGORY	A	B	C	D
LPV DA	285-7/8	267 (300-7/8)		
LNAV/VNAV DA	336-1	318 (400-1)		
LNAV MDA	500-1	482 (500-1)	500-13/8	482 (500-13/8)
CIRCLING	500-1 478 (500-1)	620-1 598 (600-1)	620-11/2 598 (600-11/2)	980-3 958 (1000-3)

ELEV 22 D TDZE 18

61

5750 X 150

4998 X 150

106

173

1

69±

HIRL Rwy 1-19 0
MIRL Rwy 10-28 0