
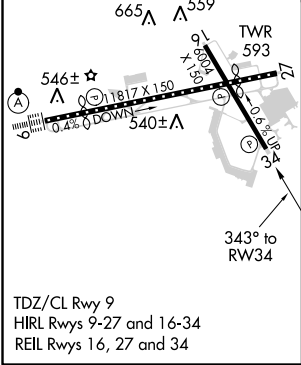
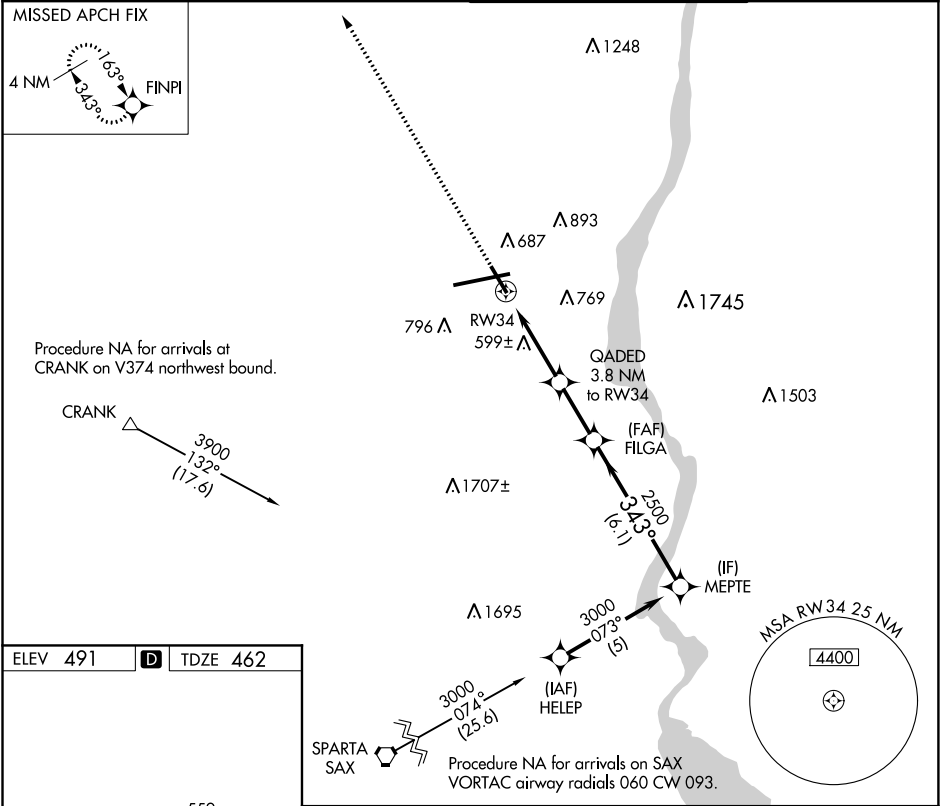



WAAS CH 90217 W34A	APP CRS 343°	Rwy ldg TDZE 462 Apt Elev 491	6004 462 491
--	------------------------	---	---

RNAV (GPS) RWY 34
NEW YORK STEWART INTL (SWF')

RNP APCH.	MISSED APPROACH: Climb to 3900 direct FINPI and hold.
 Rwy 34 helicopter visibility reduction below 3/4 SM NA.	

ATIS 124.575	NEW YORK APP CON 132.75 363.1	STEWART TOWER 121.0 254.4	GND CON 121.9
------------------------	---	-------------------------------------	-------------------------



3900	FINPI	MEPTE	
* LNAV only.	GADED 3.8 NM to RW34	FILGA 2500	3000
RW34	* 1700	2500	GP 3.00° TCH 50
3.8 NM	2.4 NM	6.1 NM	
CATEGORY	A	B	C
LPV DA	737-1	275 (300-1)	
LNAV MDA	1020-1	558 (600-1)	1020-1½ 558 (600-1½)
 CIRCLING	1200-1	709 (800-1)	1200-2 709 (800-2)

NE-2, 31 DEC 2020 to 28 JAN 2021

NE-2, 31 DEC 2020 to 28 JAN 2021