

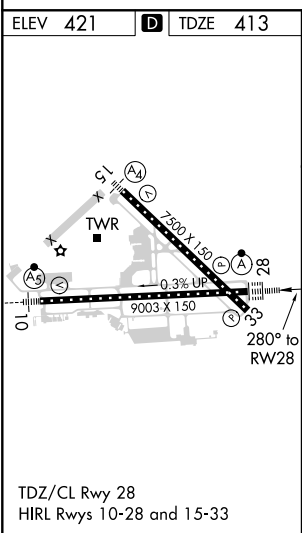
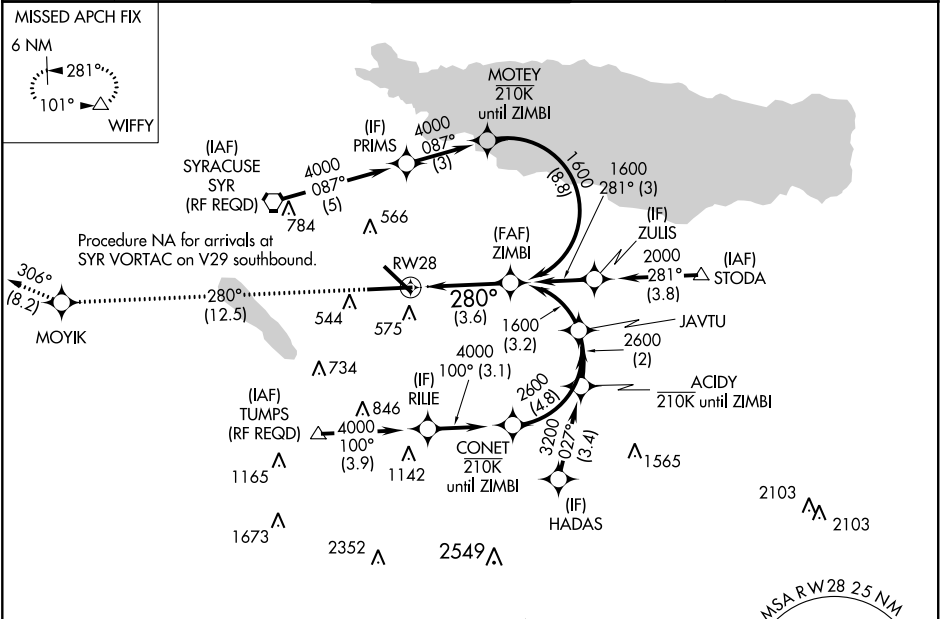
APP CRS	Rwy Idg	9003
280°	TDZE	413
	Apt Elev	421

RNAV (RNP) Y RWY 28

SYRACUSE HANCOCK INTL (SYR)

RNP AR APCH.	ALSF-2	MISSED APPROACH: Climb to 3000 on track 280° to MOYIK and on track 306° to WIFFY and hold.
▼ For uncompensated Baro-VNAV systems, procedure NA below -18°C or above 54°C. For inop ALS, increase RNP 0.15 all Cats visibility to 1½. For inop ALS, increase RNP 0.30 all Cats visibility to 1½.		

ATIS	SYRACUSE APP CON	SYRACUSE TOWER	GND CON	CLNC DEL
124.225	126.125 269.125	120.3 239.0	121.7 348.6	125.05 257.775



3000	MOYIK	WIFFY	See planview for multiple IF locations.	ZIMBI
tr 280°		tr 306°		1600
GP 3.00° TCH 60				
CATEGORY	A	B	C	D
RNP 0.15 DA		862/55	449 (500-1)	
RNP 0.30 DA		957-1½	544 (600-1½)	
AUTHORIZATION REQUIRED				

NE-2, 31 DEC 2020 to 28 JAN 2021

NE-2, 31 DEC 2020 to 28 JAN 2021