

WAAS CH 97622 W28A	APP CRS 282°	Rwy Idg TDZE 323 Apt Elev 378
--	------------------------	---

RNAV (GPS) RWY 28

SCHENECTADY COUNTY (SCH)

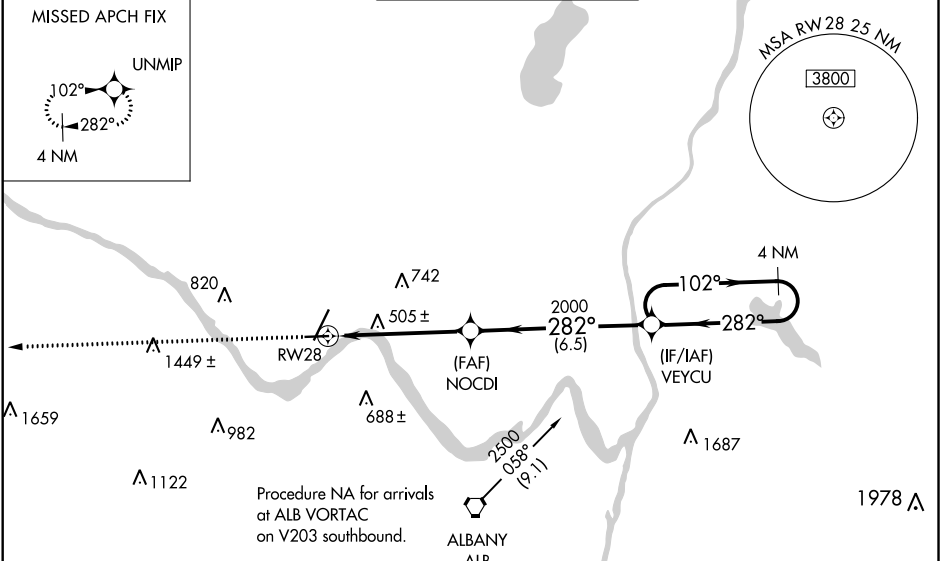
▼

NA

Night Landing: Rwy 10, 15, 33 NA. Baro-VNAV NA when using Albany altimeter setting. For uncompensated Baro-VNAV systems, LNAV/VNAV NA below -15°C (5°F) or above 54°C (130°F). DME/DME RNP-0.3 NA. Helicopter visibility reduction below 1 SM NA. When local altimeter setting not received, use Albany altimeter setting and increase all DA 33 feet and all MDA 40 feet; increase LNAV/VNAV all Cats visibility and LNAV Cat C/D visibility ½ mile.

MISSED APPROACH:
Climb to 3000 direct UNMIP and hold.

AWOS-3 119.275	ALBANY APP CON 118.05 263.075	SCHENECTADY TOWER ★ 121.3 (CTAF) 0 321.1	GND CON 121.9	UNICOM 122.95
--------------------------	---	--	-------------------------	-------------------------



3000 UNMIP

NOCDI

2000

VEYCU

4 NM Holding Pattern

Final approach chart for RWY 28. Key features include: RW28, 5.1 NM, 6.5 NM, 2000, 102° and 282° turns, 2500, GP 3.00° TCH 52, 4 NM holding pattern.

CATEGORY	A	B	C	D
LPV DA	618-1		295 (300-1)	
LNAV/VNAV DA	774-1½		451 (400-1½)	
LNAV MDA	820-1	497 (500-1)	820-1⅓	497 (500-1⅓)
CIRCLING	880-1	502 (600-1)	880-1½	980-2
			502 (600-1½)	602 (700-2)

ELEV 378

TDZE 323

Detailed approach diagram showing the runway layout, tower (TWR 389), and various navigational aids. Key features include: 4850 X 150, 700 X 150, 0.9% Up, 282° to RW28, REIL Rwy 28, HIRL Rwy 4-22, MIRL Rwy 10-28.