

LOC I-SCH 109.7	APP CRS 040°	Rwy Idg TDZE Apt Elev	7001 338 378
---------------------------	------------------------	-----------------------------	---

ILS or LOC RWY 4

SCHENECTADY COUNTY (SCH)

⚠

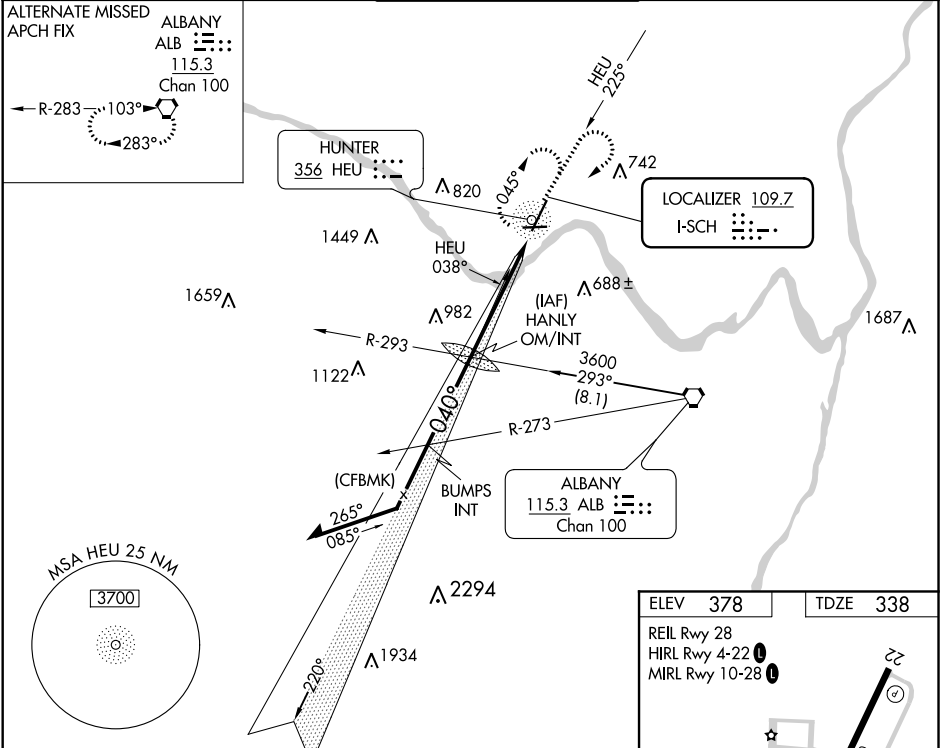
NA

Night landing: Rwy 10, 15, 33 NA. Inop table does not apply to S-ILS 4. For inop MALSRS, increase S-LOC 4 Cat A/B visibility to 1 mile and Cat C/D visibility to 1½ mile. For inoperative MALSRS when using Albany altimeter setting, increase S-LOC 4 Cat A/B visibility to 1 mile. When using Albany altimeter setting inoperative table does not apply to S-ILS-4. ADF required. When local altimeter setting not received, use Albany altimeter setting and increase all DA 33 feet, and all MDA 40 feet. Helicopter visibility reduction below ¾ SM NA.

MALSRS

MISSED APPROACH: Climb to 1500 on 040° course and on HEU NDB bearing 045° then climbing right turn to 3700 direct HEU NDB and hold, continue climb-in-hold to 3700.

AWOS-3 119.275	ALBANY APP CON 118.05 263.075	SCHENECTADY TOWER ★ 121.3 (CTAF) 0 321.1	GND CON 121.9	UNICOM 122.95
--------------------------	---	--	-------------------------	-------------------------



Remain within 10 NM

↑ 040° crs

HEU 045°

* LOC only.

CATEGORY	A	B	C	D
S-ILS 4	538-¾		200 (200-¾)	
S-LOC 4	820-¾	482 (500-¾)	820-1	482 (500-1)
CIRCLING	880-1	502 (600-1)	880-1½ 502 (600-1½)	980-2 602 (700-2)

ELEV 378

TDZE 338

REIL Rwy 28

HIRL Rwy 4-22

MIRL Rwy 10-28

TWR 389

040° 5.1 NM from FAF

FAF to MAP 5.1 NM

Knots	60	90	120	150	180
Min:Sec	5:06	3:24	2:33	2:02	1:42