

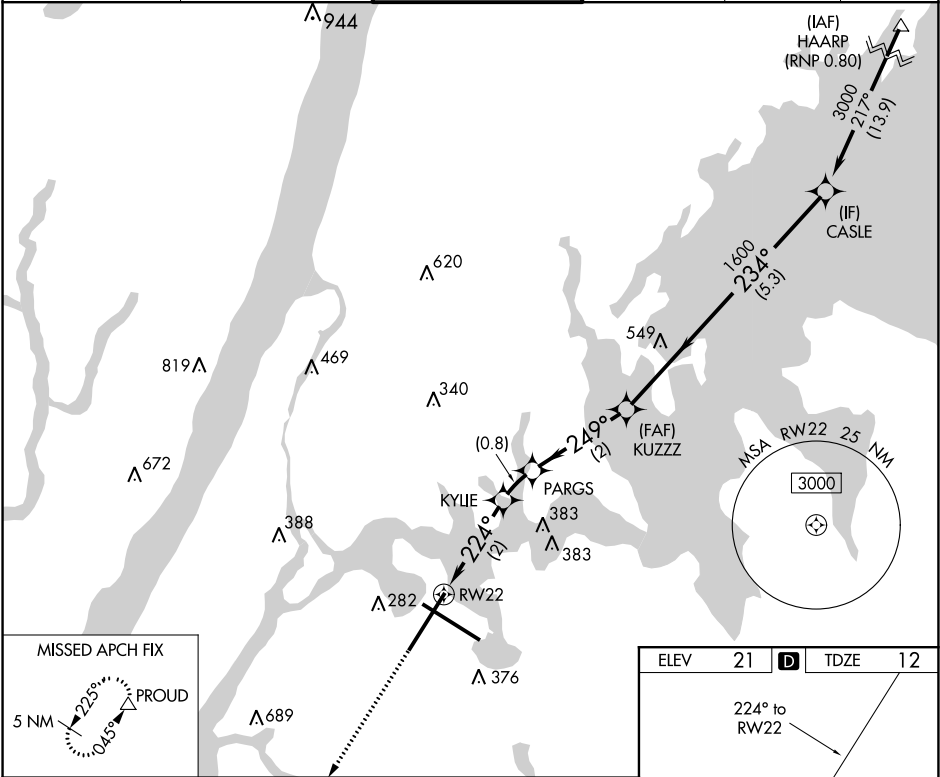
APP CRS	Rwy Idg	7001
224°	TDZE	12
	Apt Elev	21

# RNAV (RNP) Z RWY 22

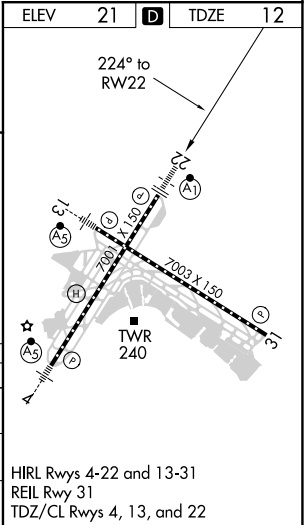
LAGUARDIA (LGA)

<p><b>NA</b></p> <p>For uncompensated Baro-VNAV systems, procedure NA below -11°C (13°F) or above 54°C (130°F). RF required. GPS required. For inop ALS, increase RNP 0.30 visibility to 1 3/8 SM.</p>	<p>ALSIF-1</p> <p>(A1)</p>	<p><b>MISSED APPROACH:</b> Climb to 3000 direct PROUD and hold, continue climb-in-hold to 3000. *Missed approach requires minimum climb of 397 feet per NM to 540.</p>
--	----------------------------	--

D-ATIS ARR	125.95	NEW YORK APP CON	120.8 263.0	LAGUARDIA TOWER	118.7 263.0	GND CON	121.7 263.0	CLNC DEL	135.2	CPDLC
D-ATIS DEP	127.05									



3000	PROUD	VGSI and RNAV glidepath not coincident (VGSI Angle 3.00/TCH 67).	KUZZZ	CASLE
			PARGS	
			KYLIE	
			947	
			704	
			1600	
			249°	
			224°	
			234°	
			3000	
			1600	
			GP 3.00°	
			TCH 52	
			2 NM	
			0.8 NM	
			2 NM	
			5.3 NM	
CATEGORY	A	B	C	D
RNP 0.30 DA*		384/40	372 (400-3/4)	
RNP 0.30 DA		437/50	425 (500-1)	



**AUTHORIZATION REQUIRED**