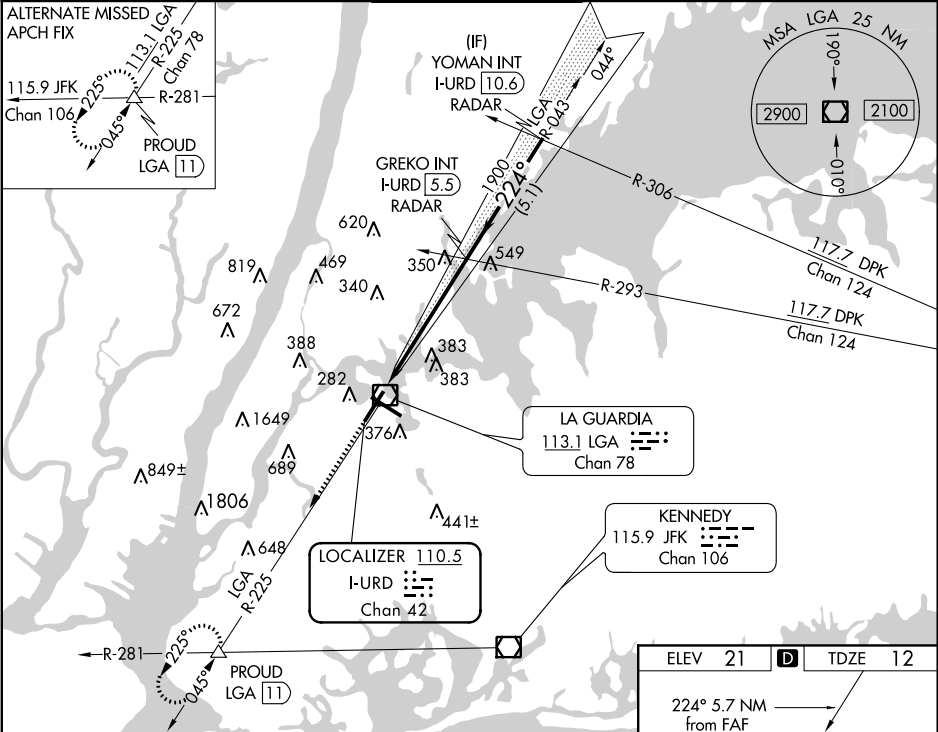


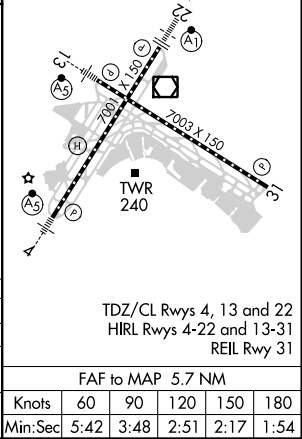
LOC/DME I-URD <b>110.5</b> Chan <b>42</b>	APP CRS <b>224°</b>	Rwy Idg <b>7001</b> TDZE <b>12</b> Apt Elev <b>21</b>
---	------------------------	---

ILS or LOC RWY 22  
LAGUARDIA (LGA)

RADAR required for procedure entry. RADAR or DME required for LOC only.				ALSIF-1 	MISSED APPROACH: Climb to 3000 on LGA VOR/DME R-225 to PROUD INT/LGA 11 DME and hold, continue climb-in-hold to 3000.	
D-ATIS ARR <b>125.95</b> D-ATIS DEP <b>127.05</b>				NEW YORK APP CON <b>120.8 263.0</b>	LAGUARDIA TOWER <b>118.7 263.0</b>	GND CON <b>121.7 263.0</b>
				CLNC DEL <b>135.2</b>		CPDLC



3000	PROUD	VGSI and ILS glidepath not coincident (VGSI Angle 3.00/TCH 67).
LGA R-225		
* LOC only		
I-URD DME ANTENNA	I-URD <b>0.2</b>	I-URD <b>1.5</b>
		1900
		224°
		3000
		GS 3.00° TCH 52
		1.6 NM
		4.1 NM
		5.1 NM
CATEGORY	A	B
S-ILS 22	212/18	200 (200-1/2)
S-LOC 22	600/24 588 (600-1/2)	600-1 1/4 588 (600-1 1/4)
CIRCLING	700-1 679 (700-1)	1080-3 1239 (1300-3)



NE-2, 31 DEC 2020 to 28 JAN 2021

NE-2, 31 DEC 2020 to 28 JAN 2021