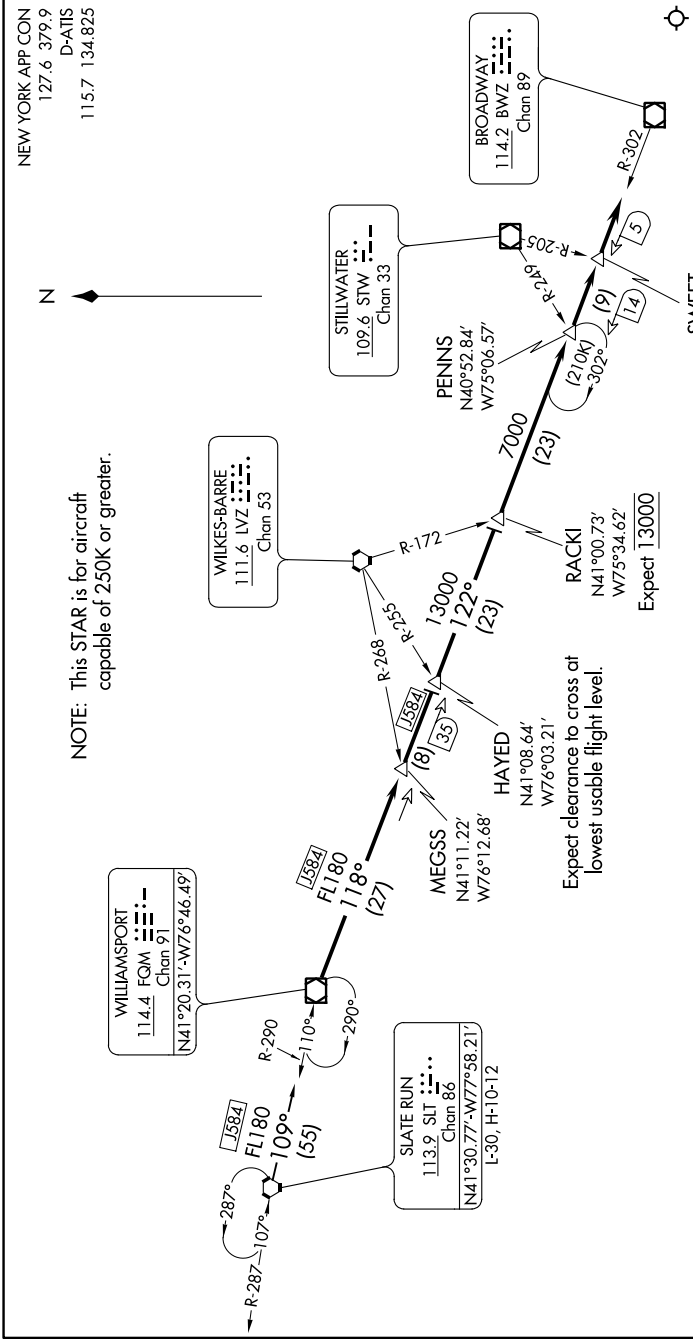


NE-2, 31 DEC 2020 to 28 JAN 2021



NOTE: This STAR is for aircraft capable of 250K or greater.

ARRIVAL ROUTE DESCRIPTION

SLATE RUN TRANSITION (SLT FQM3): From over SLT VORTAC on SLT R-109 to FQM VOR/DME.

From FQM VOR/DME on FQM R-118 to HAYED INT. Then on BWZ R-302 to RACK1 INT. Then on BWZ R-302 to SWEET INT. Depart SWEET heading 122°. Expect vectors to final approach course.

A higher crossing altitude may be required between the hours of 2300 to 0700 local.

NOTE: Chart not to scale.

NE-2, 31 DEC 2020 to 28 JAN 2021