

APP CRS
288°

Rwy Idg
6502

TDZE
10

Apt Elev
18

RNAV (RNP) Z RWY 29

NEWARK LIBERTY INTL (EWR)

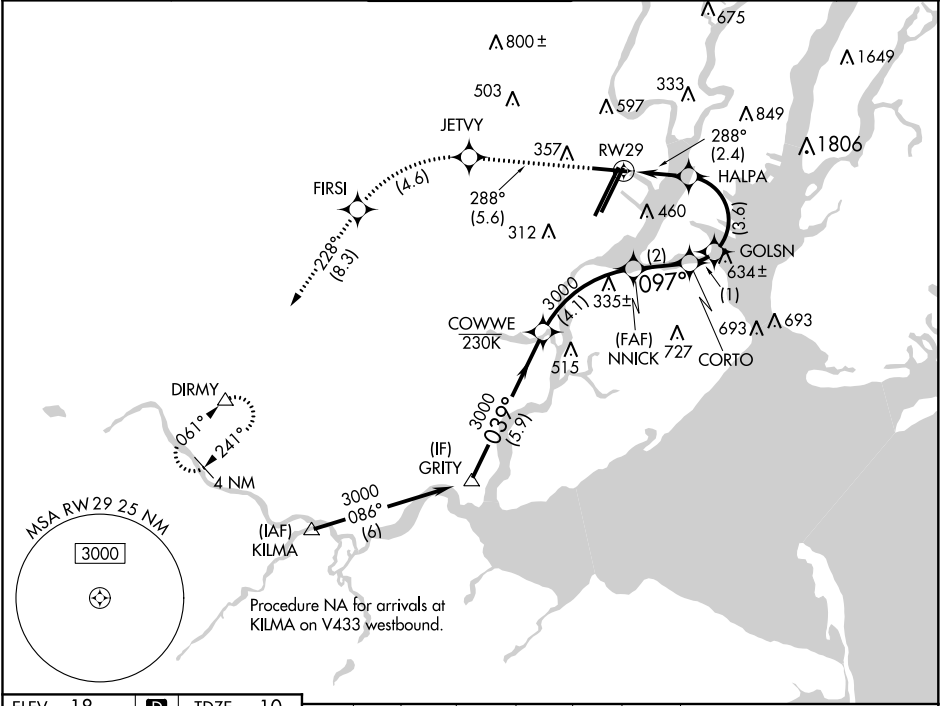
RNP AR APCH. RF required.

▼
NA

Straight-in Rwy 29 at night, operational VGSI required, remain on or above VGSI glidepath until threshold. For uncompensated Baro-VNAV systems, procedure NA below -14°C or above 54°C.
* Missed approach requires minimum climb of 340 feet per NM to 800.

MISSED APPROACH: Climb to 3000 on track 288° to JETVY and left turn to FIRSI, and on track 228° to DIRMY and hold.

D-ATIS	NEW YORK APP CON	NEWARK TOWER	GND CON	CLNC DEL	CPDLC
115.7 134.825	128.55 379.9	118.3 257.6	121.8	118.85	



ELEV 18

TDZE 10

Diagram details: This diagram shows the transition from a 288° track to a 228° track. It includes altitudes of 3000, 2000, and 1500 feet, and distances of 2.4, 3.6, 1, 2, 4.1, and 5.9 NM. The diagram also shows the RNP 0.16 DA and RNP 0.30 DA values.

CATEGORY	A	B	C	D
RNP 0.16 DA	466-1½	456 (500-1½)		NA
*RNP 0.30 DA	485-1½	475 (500-1½)		NA
RNP 0.30 DA	573-2	563 (600-2)		NA

AUTHORIZATION REQUIRED