

APP CRS  
**288°**

Rwy Idg  
**6502**

TDZE  
**10**

Apt Elev  
**18**

**RNAV (RNP) Y RWY 29**

NEWARK LIBERTY INTL (EWR)

RNP AR APCH. RF required.

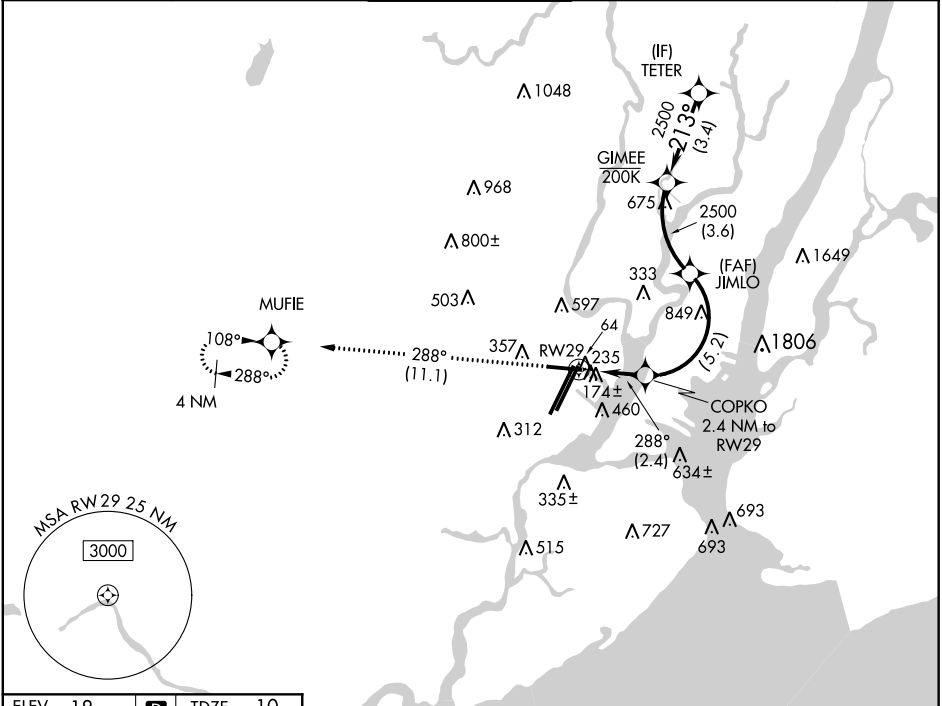
▼

NA

Straight-in Rwy 29 at night, operational VGSI required, remain on or above VGSI glidepath until threshold. For uncompensated Baro-VNAV systems, procedure NA below -12°C or above 54°C.  
\*\*Missed approach requires a minimum climb of 417 feet per NM to 800.

MISSED APPROACH: Climb to 2000 on track 288° to MUFIE and hold.

D-ATIS	NEW YORK APP CON	NEWARK TOWER	GND CON	CLNC DEL	CPDLC
115.7 134.825	128.55 379.9	118.3 257.6	121.8	118.85	



ELEV 18

D

TDZE 10

2000

tr 288°

MUFIE

TWR 348

22L 22R

6726 X 150

1000 X 150

2000 X 150

288° to RW29

4L

4R

TDZ/CL Rws 4L, 4R, 11, 22L, 22R, and 29

REIL Rws 11, 22R, and 29

HIRL Rws 4L-22R, 4R-22L, and 11-29

COPKO 2.4 NM to RW29

JIMLO 2500

GIMEE 2500

TETER 3000

GP 3.00°

TCH 60

CATEGORY	A	B	C	D
RNP 0.16 DA		461-1½	451 (500-1½)	
RNP 0.30 DA		** 530-1¾	520 (600-1¾)	
RNP 0.30 DA		573-1⅞	563 (600-1⅞)	

**AUTHORIZATION REQUIRED**