

| | | |
|--|------------------------|---|
| WAAS CH 56224 W04A | APP CRS 039° | Rwy Idg 8460 TDZE 10 Apt Elev 17 |
|--|------------------------|---|

RNAV (GPS) RWY 4L

NEWARK LIBERTY INTL (EWR)

RNP APCH.

T For uncompensated Baro-VNAV systems, LNAV/VNAV NA below -13°C or above 54°C. For inop ALS, increase LPV all Cats visibility to RVR 5500.

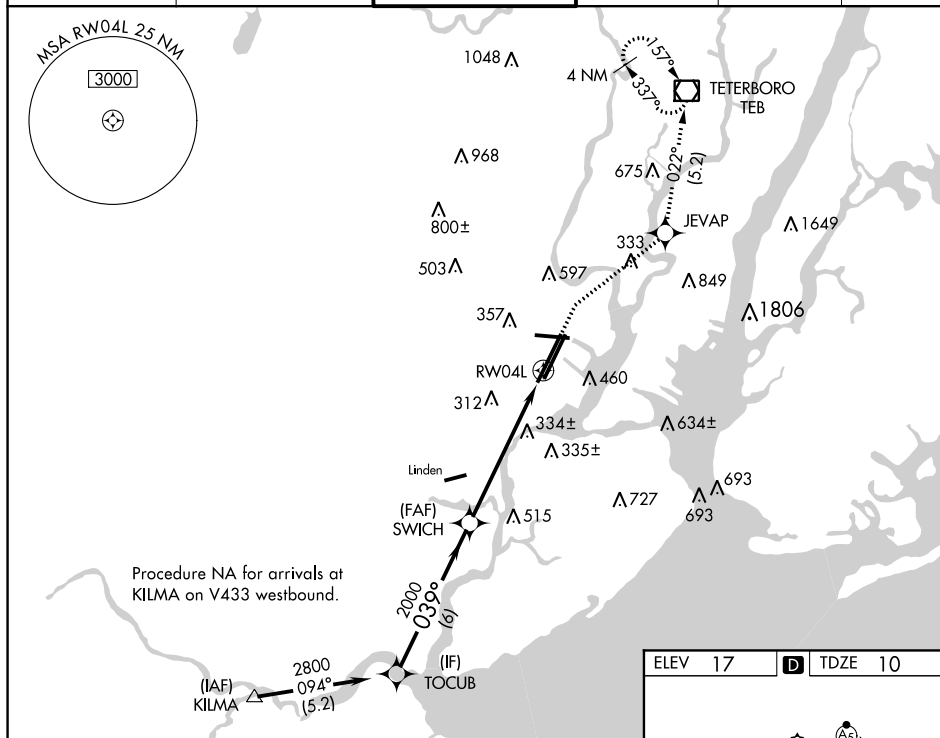
A When Circling to Rwy 29 at night, operational VGSI required, remain on or above VGSI glidepath until threshold.

MALS

(A5)





MISSED APPROACH: Climb to 440 then climbing right turn to 2500 direct JEVAP and on track 022° to TEB VOR/DME and hold.

| | | | | | |
|---------------|------------------|--------------|---------|----------|-------|
| D-ATIS | NEW YORK APP CON | NEWARK TOWER | GND CON | CLNC DEL | CPDLC |
| 115.7 134.825 | 128.55 379.9 | 118.3 257.6 | 121.8 | 118.85 | |

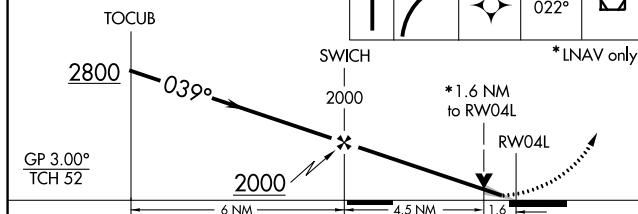


| | | | | |
|------|----|----------|------|----|
| ELEV | 17 | D | TDZE | 10 |
|------|----|----------|------|----|

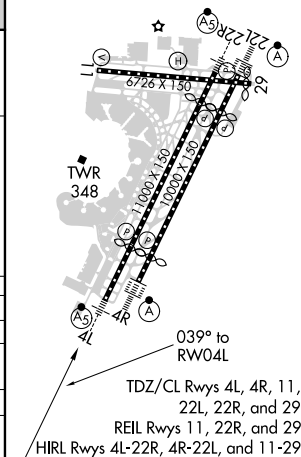
VGSI and RNAV glidepath not coincident
(VGSI Angle 3.10/TCH 77).

| | | | | |
|--|---|--|------------|--|
| 440  | 2500  | JEVAP  | tr 022° | TEB  |
|--|---|--|------------|--|

* LNAV only



| CATEGORY | A | B | C | D |
|-------------------|----------------------|----------------------|------------------------|----------------------|
| LPV DA | | 379/35 | 369 (400-½) | |
| LNAV/ VNAV | | 470/50 | 460 (500-1) | |
| LNAV MDA | 600/24 | 590 (600-½) | 600-1¼ | 590 (600-1¼) |
| C CIRCLING | 760-1 743 (800-1) | 820-1 803 (900-1) | 900-2¾ 883 (900-2¾) | 900-3 883 (900-3) |



RNAV (GPS) RWY 4L