

NEWARK, NEW JERSEY

AL-285 (FAA)

20310

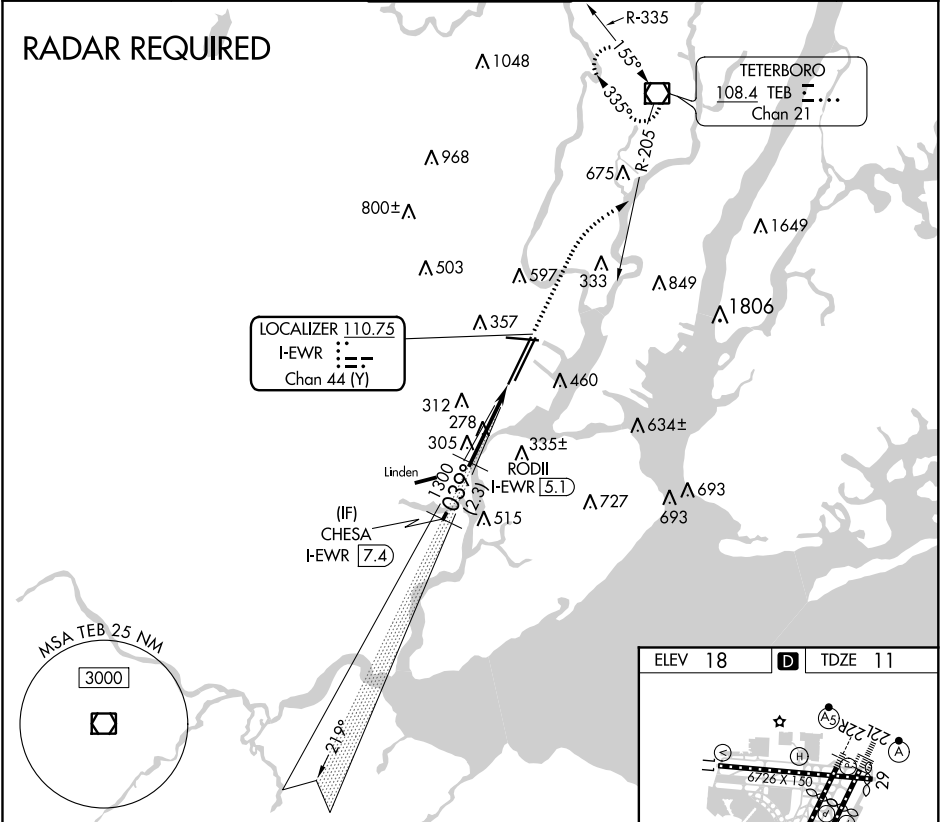
LOC/DME I-EWR	APP CRS	Rwy ldg
<b>110.75</b>	<b>039°</b>	<b>8460</b>
Chan <b>44</b> (Y)		TDZE <b>11</b>
		Apt Elev <b>18</b>

# COPTER ILS or LOC/DME RWY 4L

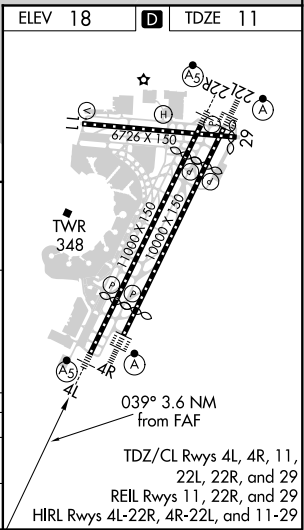
NEWARK LIBERTY INTL (EWR)

<b>NA</b>	MALSR	MISSED APPROACH: Climb to 600 then climbing right turn to 2500 via heading 060° and TEB R-205 to TEB VOR/DME and hold.
-----------	-------	--

D-ATIS	NEW YORK APP CON	NEWARK TOWER	GND CON	CLNC DEL	CPDLC
<b>115.7 134.825</b>	<b>128.55 379.9</b>	<b>118.3 257.6</b>	<b>121.8</b>	<b>118.85</b>	



CHESA I-EWR	7.4	600	2500	TEB R-205	TEB
GS 3.00°	HCH 55	1288	1300	I-EWR 1.5	
		2.3 NM	3.6 NM		
CATEGORY	COPTR	B	C	D	
H-ILS 4L	211/12		NA		
	200 (200-¼)				
H-LOC 4L	560/12		NA		
	549 (600-¼)				



NEWARK, NEW JERSEY  
Amdt 1E 14NOV13

40°42'N-74°10'W

NEWARK LIBERTY INTL (EWR)

# COPTER ILS or LOC/DME RWY 4L

NE-2, 31 DEC 2020 to 28 JAN 2021

NE-2, 31 DEC 2020 to 28 JAN 2021