

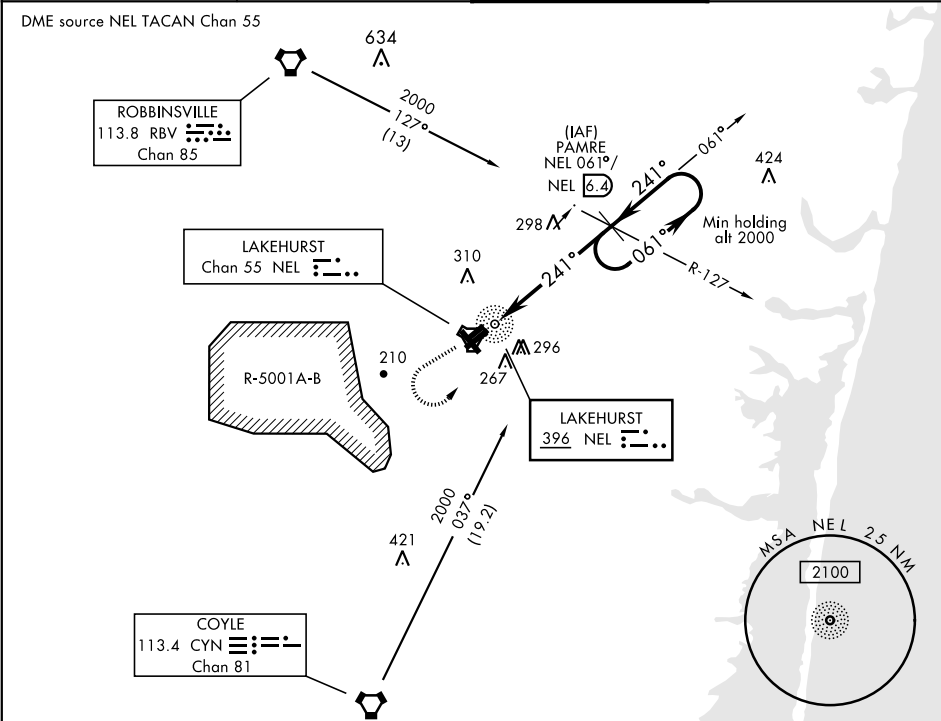
NDB NEL 396	APCH CRS 241°	Rwy Idg TDZE Arpt Elev 5002 101 101	AL-223 [USN]	LAKEHURST MAXFIELD FLD, (JOINT BASE MC GUIRE DIX LAKEHURST) (KNEL)
-----------------------	-------------------------	---	--------------	---

▼ * When ALS inop, increase, CAT AB vis to 1 mile, CAT CD vis to 1¼ miles.

MALSR
A5

MISSED APPROACH: Climb to 800, then climbing left turn to 2000 to intercept NEL NDB 061° bearing to PAMRE and hold.

ATIS ★ 276.525	MC GUIRE APP CON 126.475 363.8	LAKEHURST TOWER ★ 127.775 360.2	GND CON 118.375 307.05
--------------------------	--	---	----------------------------------



EMERG SAFE ALT 100 NM 4100

800	2000	PAMRE NEL 061°/ NEL 6.4
↑	NEL 061° brg	

TACAN NDB 1.7 LIVNE NEL 061°/ NEL 3.3 RBV R-140 PAMRE NEL 061°/ NEL 6.4 RBV R-127 061° 2000 2000 241° 1060 2.93° TCH 51

0.4 2.5 NM 3.0 NM

LAKEHURST MAXFIELD FLD, (JOINT BASE MC GUIRE DIX LAKEHURST) (KNEL)

HIRL Rwy 6-24 1 MRL Rwy 063°-243° FAF to MAP 5.5 NM

Knots	60	90	120	150	180
Min:Sec	5:30	3:40	2:45	2:12	1:50

CATEGORY	A	B	C	D
S-24 *	540-¾	439	(500-¾)	
CIRCLING	640-1 539 (600-1)	720-1 619 (700-1)	720-1¾ 619 (700-1¾)	720-2 619 (700-2)