

VOR/DME or TACAN RWY 24

VORTAC GXU <b>110.6</b> Chan <b>43</b>	APCH CRS <b>243°</b>	Rwy Idg <b>10,014</b> TDZE <b>117</b> Arpt Elev <b>141</b>
----------------------------------------------	-------------------------	------------------------------------------------------------------

AL-150 (USAF)  
MC GUIRE FIELD (JOINT BASE MC GUIRE DIX LAKEHURST) (KWRI)

**T** \* When ALS inop, increase CAT AB RVR to 55 and vis to 1 mile, CAT CDE vis to 1 3/8 miles.  
\*\* Circling East of airfield NA when R-5001 A/B active.

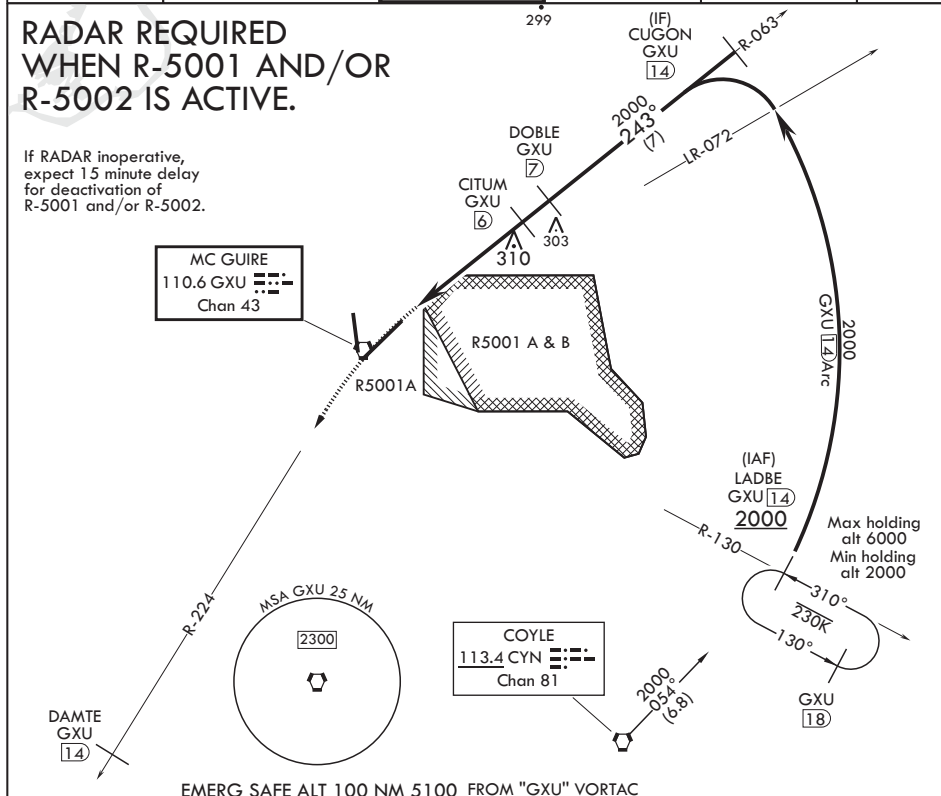
ALSF-1

**MISSED APPROACH:** Climb to 2000 via GXU R-224 to DAMTE, Expect further clearance from ATC.

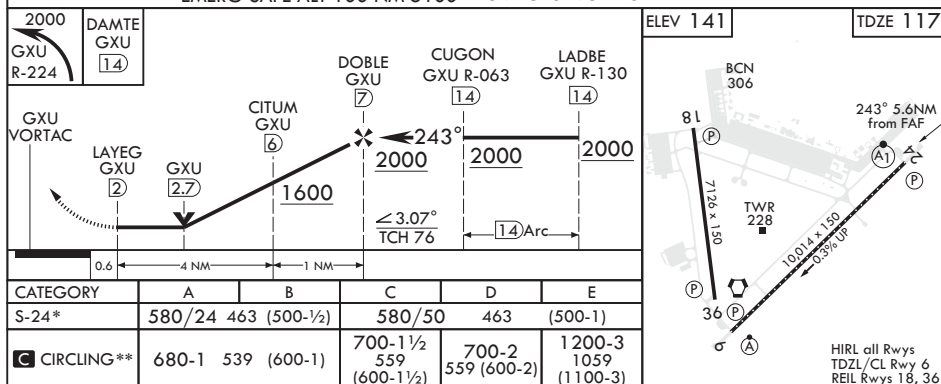
ATIS 110.6 270.1	MC GUIRE APP CON 126.475 363.8	TOWER 118.65 255.6	GND CON 121.8 275.8	CLNC DEL 135.2 335.8	PAR
---------------------	-----------------------------------	-----------------------	------------------------	-------------------------	-----

RADAR REQUIRED  
WHEN R-5001 AND/OR  
R-5002 IS ACTIVE.

If RADAR inoperative,  
expect 15 minute delay  
for deactivation of  
R-5001 and/or R-5002.



EMERG SAFE ALT 100 NM 5100 FROM "GXU" VORTAC



WRIGHTSTOWN, NEW JERSEY

MC GUIRE FIELD (JOINT BASE MC GUIRE DIX LAKEHURST) (KWRI)

Amdt 6 10SEP20

40°01'N - 74°36'W

VOR/DME or TACAN RWY 24