

WRIGHTSTOWN, NEW JERSEY

RNAV (GPS) RWY 24

WAAS CH 91359 W24A	APCH CRS 238°	Rwy ldg TDZE Arpt Elev	10,014 117 141
--------------------------	------------------	------------------------------	----------------------

AL-150 (USAF)
MC GUIRE FIELD (JOINT BASE MC GUIRE DIX LAKEHURST) (KWRI)

V * When ALS inop, increase RVR to 40, vis to 3/4 mile. ** When ALS inop, increase vis to 1 3/8 miles. *** When ALS inop increase CAT AB RVR to 55, vis to 1 mile, CAT CDE vis to 1 3/8 miles.	ALSF-1 	MISSED APPROACH: Climb to 2000 direct CISON and hold.
---	---	--

ATIS 110.6 270.1	MC GUIRE APP CON 126.475 363.8	TOWER 118.65 255.6	GND CON 121.8 275.8	CLNC DEL 135.2 335.8	PAR
---------------------	-----------------------------------	-----------------------	------------------------	-------------------------	-----

**** Circling East of the Airfield
NA when R-5001 A/B active.

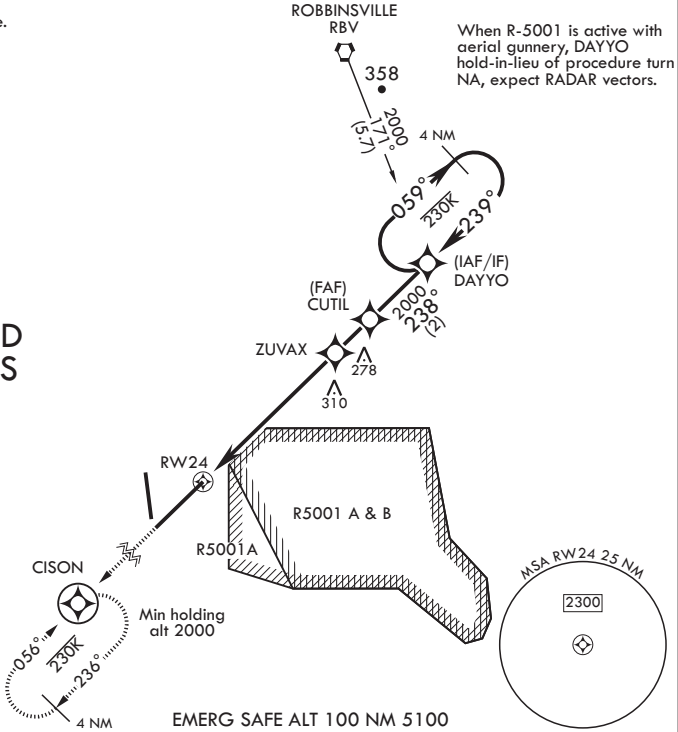
DME/DME RNP-0.3 NA

For uncompensated
Baro-VNAV systems,
Procedure NA below -15°C
(5°F) or above 53°C (128°F).

RADAR required for
holding above 2000
and/or > 230 KIAS.

RADAR REQUIRED
WHEN R-5001 IS
ACTIVE.

If RADAR inoperative,
expect 15 min delay for
deactivation of R-5001.




2000

CISON

VGSI and RNAV glidepath
not coincident (VGSI angle
3.00/TCH 75.60).

ELEV 141

TDZE 117



† LNAV only

RW24

† 1.3 NM to
RW24

ZUVAX

1600 †

CUTIL

DAYYO

238°

059°

239°

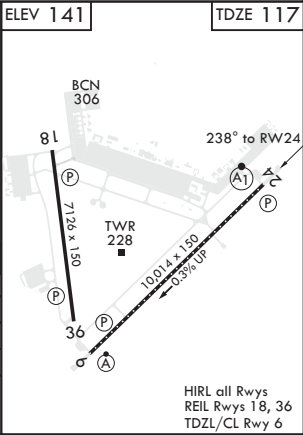
2000

GP 3.00°
TCH 49

4.6 NM

1.2 NM

CATEGORY	A	B	C	D	E
LPV DA*	317/24	200	(200-1/2)		
LNAV/VNAV DA**	580/50	463	(500-1)		
LNAV MDA***	580/24 463 (500-1/2)	580/50	463 (500-1)		
C CIRCLING****	680-1 539 (600-1)	700-1 1/2 559 (600-1/2)	700-2 559 (600-2)	1200-3 1059 (1100-3)	



WRIGHTSTOWN, NEW JERSEY

Amtd 6 30JAN20

MC GUIRE FIELD (JOINT BASE MC GUIRE DIX LAKEHURST) (KWRI)

40°01'N - 74°36'W

RNAV (GPS) RWY 24