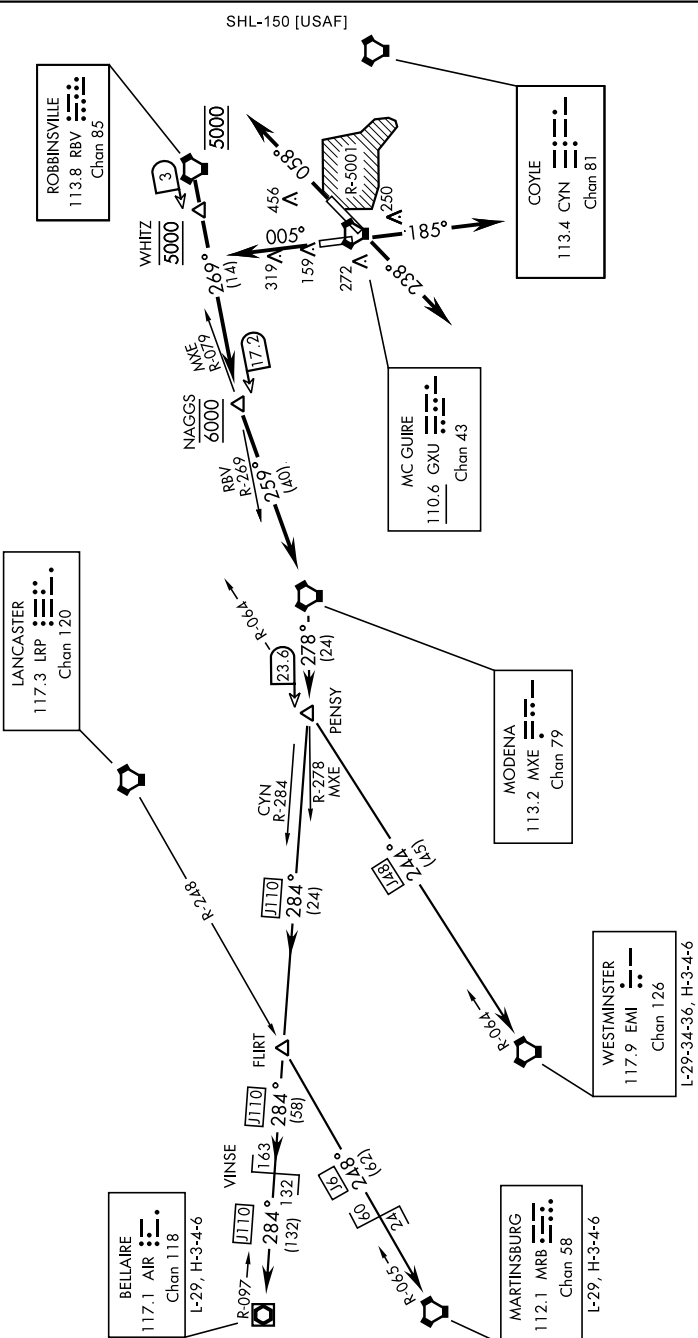


Rwy	60	120	180	240	300	360
6	V/V(fpm)	436	872	1308	1744	2180
18	V/V(fpm)	351	702	1053	1404	1755
24	V/V(fpm)	359	718	1077	1436	1795
36	V/V(fpm)	421	842	1263	1684	2105
					2154	2526

ATC Climb Rate to 5000

RADAR REQUIRED UNTIL CROSSING  
MXE VORTAC R-278/23.6 DME (PENSY)

ATIS 110.6 270.1  
CLNC DEL 135.2 335.8  
GND CON 121.8 275.8  
MC GUIRE TOWER 118.65 255.6  
MC GUIRE DEP CON 126.475 363.8



NOTE: Chart not to scale

(Continued on next page)