

LOC I-ELM	APP CRS	Rwy Idg	7799
109.1	242°	TDZE	955
		Apt Elev	955

ILS or LOC RWY 24

ELMIRA/CORNING RGNL (ELM)

RADAR required to define ERINN. RNAV 1-GPS required from MAP to UNOLY.

RNAV-1 GPS required for procedure entry. ADF or RADAR required.

MAISR

AS

MISSED APPROACH:
Climb to 4000 direct UNOLY/RADAR and hold.
** Missed approach requires minimum climb of 260 feet per NM to 2400.

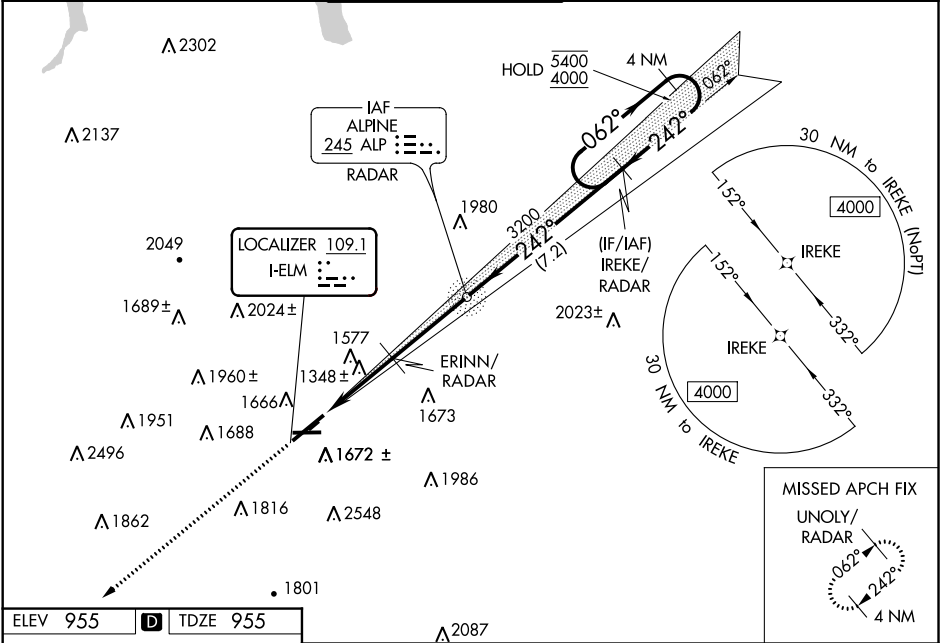
⚠ Circling NA for Cat D south of Rwy 10 and 28. Inop table does not apply to S-LOC 24 Cats C/D. Circling NA to Rwy 5 and 23. Circling Rwy 10 NA at night.

⚠ For inop ALS increase S-ILS 24 all Cats visibility to RVR 6000.

⚠ -17°C

****** S-ILS 24 RVR 1800 authorized with use of FD or AP or HUD to DA.

ATIS	ELMIRA APP CON *	ELMIRA TOWER *	GND CON	CINC DEL	UNICOM
125.475	128.425 257.8	121.1 (CTAF) 0 257.8	121.9	121.9	122.95



ELEV 955	D	TDZE 955
<p>242° 6.8 NM from FAF</p> <p>TWR 1027</p> <p>5404 X 150</p> <p>2017 X 150</p> <p>HIRL Rwy 6-24</p> <p>MIRL Rwy 10-28</p>		
<p>Knots 60 90 120 150 180</p> <p>Min:Sec 6:48 4:32 3:24 2:43 2:16</p>		

CATEGORY	A	B	C	D
S-ILS 24 **	1155/24 200 (200-½)			
S-ILS 24	1340/35 385 (400-¾)			
S-LOC 24	2060/40 1105 (1200-¾)	2060/55 1105 (1200-1)	2060-3 1105 (1200-3)	
CIRCLING	2060-1¼ 1105 (1200-1¼)	2080-1½ 1125 (1200-1½)	2100-3 1145 (1200-3)	2340-3 1385 (1400-3)
ERINN FIX MINIMUMS				
S-LOC 24	1600/24 1065 (1100-1¼)	645 (700-½)	1600-1¾ 1145 (1200-3)	645 (700-1¾)
CIRCLING	2020-1¼ 1065 (1100-1¼)	2080-1½ 1125 (1200-1½)	2100-3 1145 (1200-3)	2340-3 1385 (1400-3)