

LOC I-GBI 108.5	APP CRS 055°	Rwy Idg TDZE Apt Elev 7569 708 727
---------------------------	------------------------	--

ILS or LOC RWY 5
BUFFALO NIAGARA INTL (BUF)

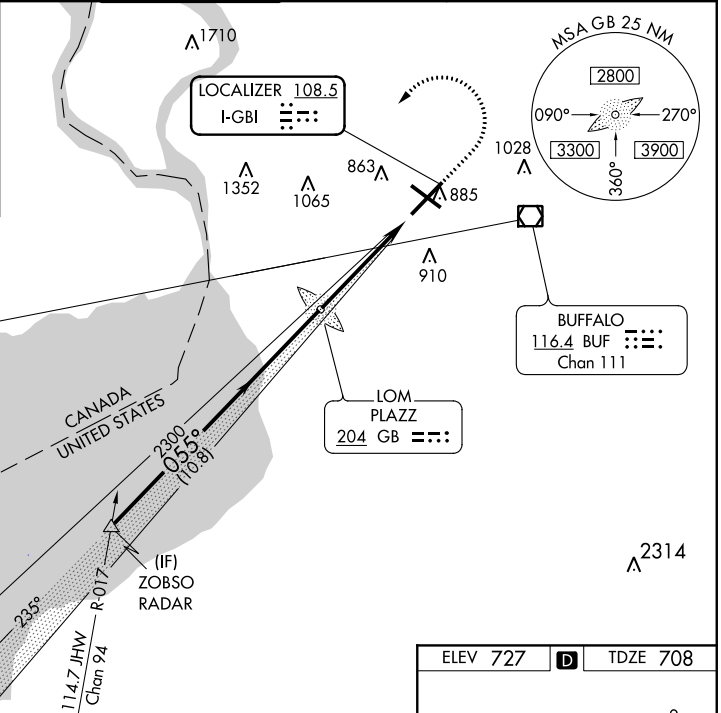
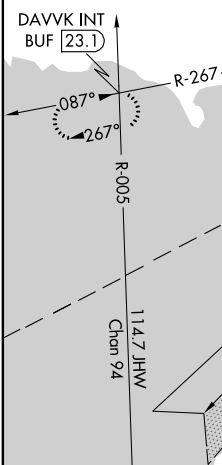
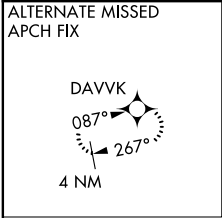
RADAR required for procedure entry. ADF required for LOC only.



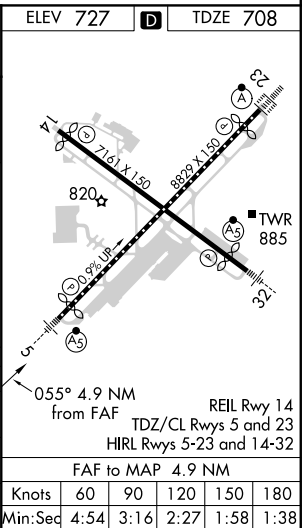
MISSED APPROACH: Climb to 1200 then climbing left turn to 3000 on heading 245° and BUF VOR/DME R-267 to DAVVK INT/BUF 23.1 DME and hold.

Autopilot coupled approach NA.

D-ATIS 135.35	BUFFALO APP CON 126.15 263.125	BUFFALO TOWER 120.5 257.8	GND CON 133.2 257.8	CLNC DEL 124.7 257.8	CPDLC
-------------------------	--	-------------------------------------	-------------------------------	--------------------------------	-------



VGSI and ILS glidepath not coincident (VGSI Angle 3.00/TCH 49).				
ZOBSDO INT RADAR		PLAZZ LOM		
4000 - 055°		2294		
GS 3.00° TCH 46		2300		
10.8 NM		4.9 NM		
CATEGORY	A	B	C	D
S-ILS 5	908/18 200 (200-½)			
S-LOC 5	1100/24 392 (400-½)		1100/40 392 (400-¾)	
CIRCLING	1200-1 473 (500-1)		1220-1½ 493 (500-1½)	
			1340-2 613 (700-2)	



NE-2, 31 DEC 2020 to 28 JAN 2021

NE-2, 31 DEC 2020 to 28 JAN 2021