

ILS RWY 23 (SA CAT I)
BUFFALO NIAGARA INTL (BUF)

ALSF-2

MISSED APPROACH: Climb to 2300 then climbing right turn to 3000 on heading 300° and BUF VOR/DME R-267 to DAVVK INT/BUF 23.1 DME and hold.

D-ATIS 135.35	BUFFALO APP CON 126.15 263.125	BUFFALO TOWER 120.5 257.8	GND CON 133.2 257.8	CLNC DEL 124.7 257.8	CPDLC
------------------	-----------------------------------	------------------------------	------------------------	-------------------------	-------

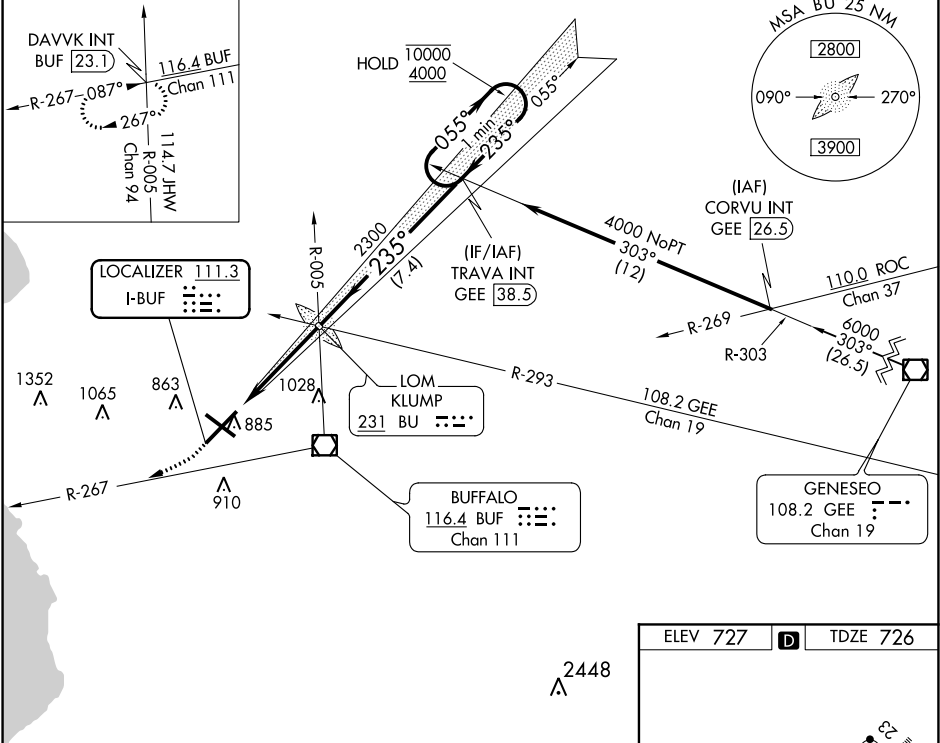


Figure 1-1: Example of a 1-minute holding pattern. The diagram illustrates a holding pattern for the TRAVA INT GEE 38.5 fix. The pattern is defined by a 1000' radius and a 235° turn. The aircraft starts at 2300, turns to 3000 (hdg 300°), then to 2300. The pattern is labeled 'One Minute Holding Pattern'. The distance from the fix to the start of the pattern is 4.4 NM, and the distance from the fix to the end of the pattern is 7.4 NM. The altitude is 2205. The ground speed is 3.00° and the track is 51.

CATEGORY	A	B	C	D
S-ILS 23	SA CAT I	RA 194/14	154 DA 880	

SA CATEGORY I ILS- SPECIAL AIRCREW
& AIRCRAFT CERTIFICATION REQUIRED

REIL Rwy 14
TDZ/CL Rwy 5 and 23
HIRL Rwy 5-23 and 14-32