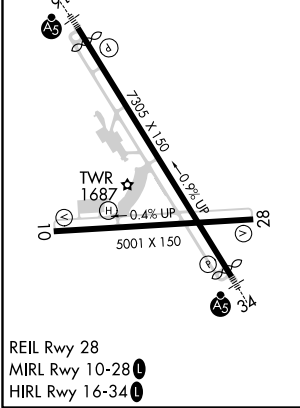
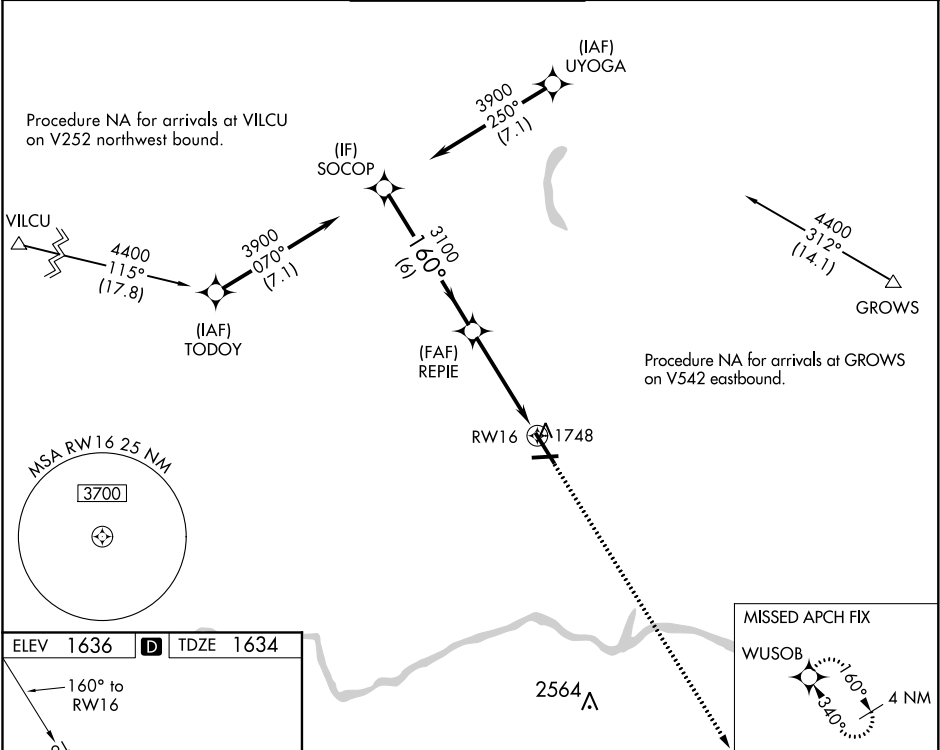


WAAS CH 66015 W16A	APP CRS 160°	Rwy Idg TDZE Apt Elev	6905 1634 1636
----------------------------------------	------------------------	-----------------------------	-------------------------------------------

RNAV (GPS) RWY 16

GREATER BINGHAMTON/EDWIN A LINK FIELD (BGM)

RNP APCH. ⚠ For uncompensated Baro-VNAV systems, LNAV/VNAV NA below -21°C or above 54°C. ⚠ For inop ALS, increase LNAV/VNAV all Cats visibility to RVR 5500.				MALSR ⚠	MISSED APPROACH: Climb to 4000 direct WUSOB and hold.
ATIS 128.15	BINGHAMTON APP CON ★ 118.6 257.625	BINGHAMTON TOWER ★ 119.3 (CTAF) 239.25	GND CON 121.9	CLNC DEL 125.05	UNICOM 122.95



CATEGORY	A	B	C	D
LPV DA	1884/24 250 (300-½)			
LNAV/ VNAV DA	1984/30 350 (400-¾)			
LNAV MDA	2060/24 426 (500-½)		2060/40 426 (500-¾)	
Ⓢ CIRCLING	2120-1 484 (500-1)		2120-1½ 2200-2 484 (500-½) 564 (600-2)	

NE-2, 31 DEC 2020 to 28 JAN 2021

NE-2, 31 DEC 2020 to 28 JAN 2021