
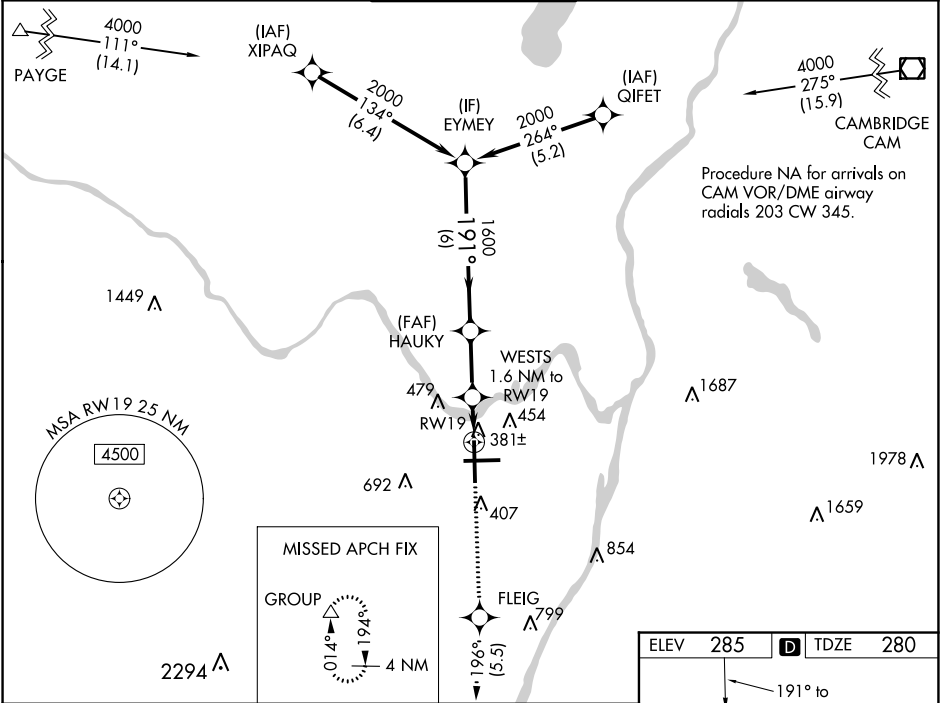


WAAS CH 56302 W19A	APP CRS 191°	Rwy Idg TDZE Apt Elev	8500 280 285
--	------------------------	-----------------------------	---

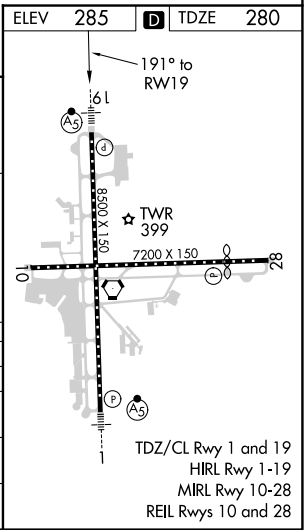
RNAV (GPS) Y RWY 19
ALBANY INTL (ALB)

⚠ For uncompensated Baro-VNAV systems, LNAV/VNAV NA below -5°C (23°F) or above 54°C (130°F). For inoperative MALSR, increase LNAV Cuts C/D visibility to RVR 5500. Circling NA west of Rwy 1-19. DME/DME RNP-0.3 NA.	MALSR 	MISSED APPROACH: Climb to 3000 direct FLEIG and on track 196° to GROUP and hold.
---	--	--

D-ATIS 120.45	ALBANY APP CON 132.825 307.2	ALBANY TOWER 119.5 257.8	GND CON 121.7 348.6	CLNC DEL 127.50
-------------------------	--	------------------------------------	-------------------------------	---------------------------



	EYMEY	HAUKY	3000	FLEIG	tr 196°	GROUP
	2000	1600				
	GP 3.00° TCH 54			WESTS 1.6 NM to RWY 19	*1 NM to RWY 19	
				*840		
					RWY 19	
CATEGORY	A	B	C	D		
LPV DA		480/18	200 (200-½)			
LNAV/VNAV DA		590/24	310 (400-½)			
LNAV MDA	640/24	360 (400-½)	640/30	360 (400-¾)		
CIRCLING	820-1	535 (600-1)	820-1½ 535 (600-½)	960-2¼ 675 (700-2¼)		



NE-2, 31 DEC 2020 to 28 JAN 2021

NE-2, 31 DEC 2020 to 28 JAN 2021