

WAAS CH <b>97402</b> <b>W01A</b>	APP CRS <b>011°</b>	Rwy Idg TDZE <b>284</b> Apt Elev <b>285</b>
--	------------------------	---

RNAV (GPS) Y RWY 1

ALBANY INTL (ALB)

▼

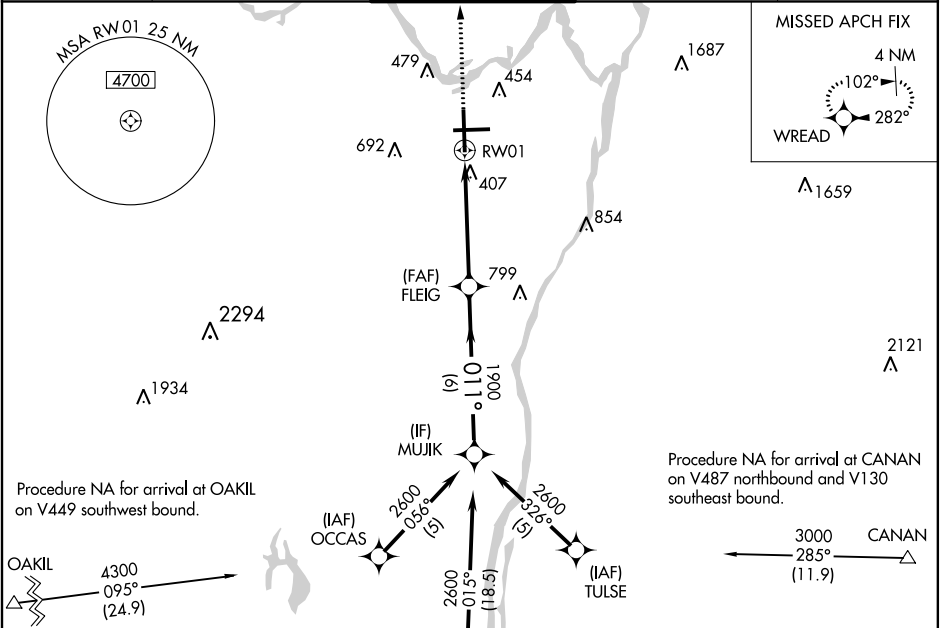
▲

For uncompensated Baro-VNAV systems, LNAV/VNAV NA below -18°C (0°F) or above 42°C (107°F). DME/DME RNP-0.3 NA. Circling NA west of Rwy 1-19.

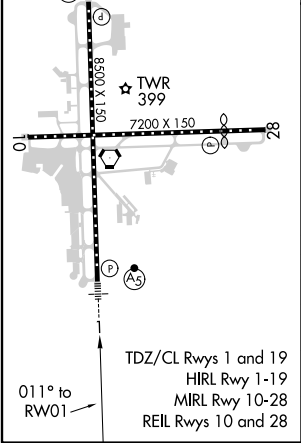
MALSR



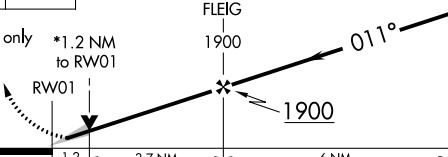

MISSED APPROACH: Climb to 3000 direct WREAD and hold, continue climb-in-hold to 3000.

D-ATIS <b>120.45</b>	ALBANY APP CON <b>132.825 307.2</b>	ALBANY TOWER <b>119.5 257.8</b>	GND CON <b>121.7 348.6</b>	CLNC DEL <b>127.50</b>
-------------------------	--	------------------------------------	-------------------------------	---------------------------



ELEV <b>285</b>	<b>D</b>	TDZE <b>284</b>
-----------------	----------	-----------------



<div>3000</div> <div></div>		<div>WREAD</div> <div></div>		
<div>* LNAV only</div> <div></div>		<div>* 1.2 NM to RW01</div> <div>GP 3.00° TCH 56</div>		
CATEGORY	A	B	C	D
LPV DA	484/18 200 (200-½)			
LNAV/VNAV DA	687/45 403 (500-¾)			
LNAV MDA	720/24	436 (500-½)	720/40	436 (500-¾)
 CIRCLING	820-1	535 (600-1)	820-1½ 535 (600-1½)	960-2¼ 675 (700-2¼)

NE-2, 31 DEC 2020 to 28 JAN 2021

NE-2, 31 DEC 2020 to 28 JAN 2021