

WAAS CH <b>69415</b> <b>W01A</b>	APP CRS <b>013°</b>	Rwy Idg <b>8000</b> TDZE <b>63</b> Apt Elev <b>75</b>
--	------------------------	---

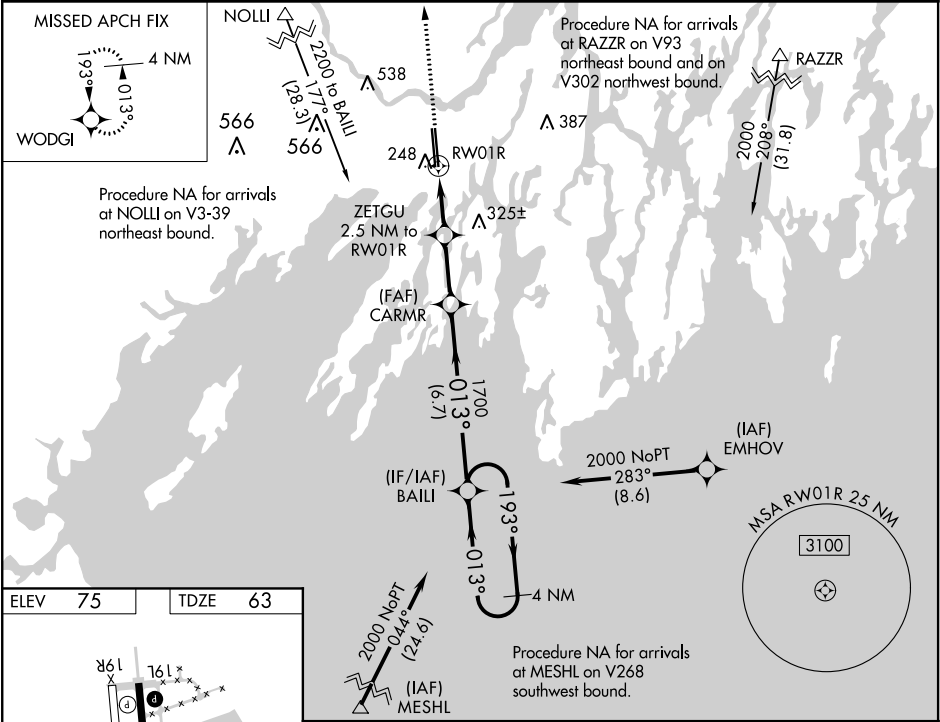
RNAV (GPS) RWY 1R  
BRUNSWICK EXECUTIVE (BXM)

**⚠** Baro-VNAV NA when using Portland altimeter setting. For uncompensated Baro-VNAV systems, LNAV/VNAV NA below -15°C (5°F) or above 54°C (130°F). DME/DME RNP-0.3 NA. VDP NA when using Portland altimeter setting. When local altimeter setting not received, use Portland altimeter setting and increase LPV DA to 314, LNAV/VNAV DA to 461 and all LNAV/VNAV visibilities ¼ SM; increase all MDA 60 feet and LNAV Cat C/D visibilities ¼ SM and Circling Cat C/D visibilities ¼ SM. For inop ALS when using Portland altimeter setting, increase LNAV Cat C/D visibility to 1 ⅜ SM.

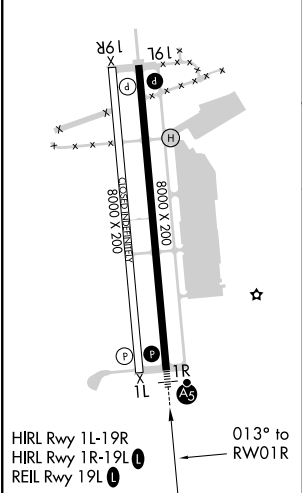
MALSR

MISSED APPROACH:  
Climb to 2500 direct  
WODGI and hold.

AWOS-AV <b>134.875</b>	PORTLAND APP CON ★ (112°-292°) <b>119.75 269.35</b> (293°-111°) <b>120.4 299.2</b>	UNICOM <b>122.725</b> (CTAF) <b>0</b>
---------------------------	---	--



ELEV <b>75</b>	TDZE <b>63</b>
----------------	----------------



2500	WODGI	ZETGU 2.5 NM to RW01R	CARMR	BAILI	4 NM Holding Pattern
*LNAV only.		RW01R *1.2 NM to RW01R	1700	1700	193° 2000
		*900			GP 3.00° TCH 50
		1.2 NM	1.3 NM	2.5 NM	6.7 NM
CATEGORY	A	B	C	D	
LPV DA		263-½	200 (200-½)		
LNAV/VNAV DA		410-⅝	347 (400-⅝)		
LNAV MDA	500-½	437 (500-½)	500-¾	437 (500-¾)	
CIRCLING	560-1	485 (500-1)	840-2¼ 765 (800-2¼)	840-2½ 765 (800-2½)	

NE-1, 31 DEC 2020 to 28 JAN 2021

NE-1, 31 DEC 2020 to 28 JAN 2021