

WAAS CH 42536 W32A	APP CRS 323°	Rwy Idg 9501 TDZE 116 Apt Elev 130
--	------------------------	---

RNAV (GPS) RWY 32

CAPE COD COAST GUARD AIR STATION (FMH)

A

For uncompensated Baro-VNAV systems, LNAV/VNAV NA below -15°C (5°F) or above 54°C (130°F). DME/DME RNP-0.3 NA. Circling NA NE of Rwy 14 and NW of Rwy 23.

MISSED APPROACH: Climb to 600 then climbing left turn to 3000 direct GLESO and hold, continue climb-in-hold to 3000.

ATIS 120.475 236.825	BOSTON APP CON ★ 118.2 284.6	COAST GUARD TOWER 128.425 291.1	GND CON 124.15 275.8
-------------------------	---------------------------------	------------------------------------	-------------------------

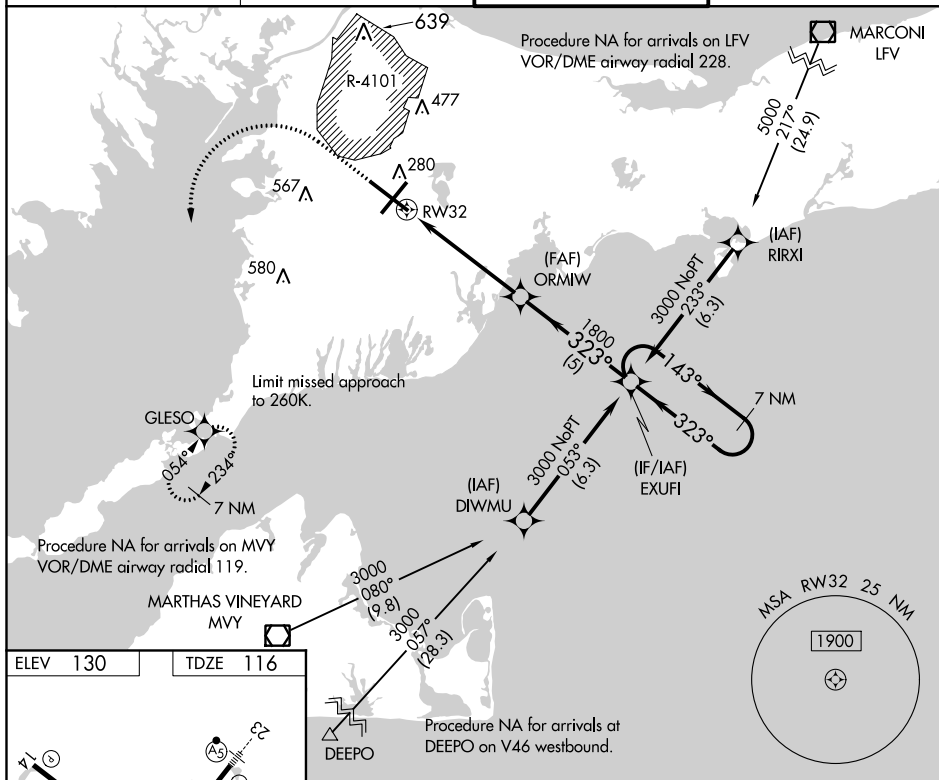


Diagram illustrating the RW32 instrument approach procedure. Key features include:

- Runway 32 (RW32) and Runway 5 (RW5).
- Obstacle (TW 214) and Obstacle (269).
- Altitude constraints: 1800, 143°, 323°, 3000.
- GP 3.00° TCH 50.
- Distance markers: 1.1 NM, 4 NM, 5 NM.
- Category: A, B, C, D.
- LPV DA: 316/24, 200 (200-1/2).
- LNAV/VNAV DA: 429/26, 313 (300-1/2).
- LNAV MDA: 520/24, 404 (400-1/2), 520/40, 404 (400-3/4).
- CIRCLING: 580-1, 640-1, 900-2 1/4, 900-2 1/2, 450 (500-1), 510 (600-1), 770 (800-2 1/4), 770 (800-2 1/2).