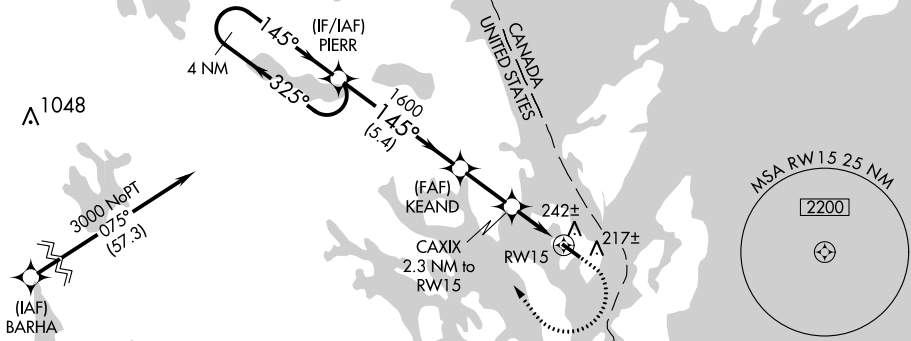


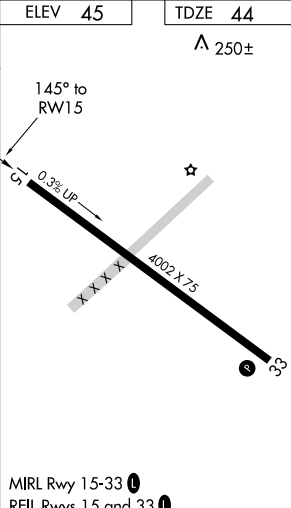
RNAV (GPS) RWY 15  
EASTPORT MUNI (EPM)

For uncompensated Baro-VNAV systems, LNAV/VNAV NA below -15°C or above 47°C. Rwy 15 helicopter visibility reduction below 1 SM NA. When local altimeter setting not received, use Hancock County-Bar Harbor altimeter setting: increase LPV DA to 462 feet and all visibilities  $\frac{3}{4}$  SM; increase LNAV/VNAV DA to 565 feet and all visibilities  $\frac{1}{2}$  SM; increase all MDA 160 feet and LNAV visibility Cat C and D  $\frac{3}{4}$  SM and Circling visibility Cat C and D  $\frac{1}{2}$  SM. Baro-VNAV NA when using Hancock County-Bar Harbor altimeter setting. Straight-in Rwy 15 NA at night, Circling Rwy 15 NA at night.

**MISSED APPROACH:**  
Climb to 500 then  
climbing right turn to  
4000 direct PIERR  
and hold, continue  
climb-in-hold to 4000.

UNICOM  
122.8 (CTAF) 

CATEGORY	A	B	C	D
LPV DA	309-1		265 (300-1)	
INAV/ VNAV DA	412-1¼		368 (400-1¼)	
INAV MDA	500-1	456 (500-1)	500-1½	456 (500-1½)
<b>C</b> CIRCLING	580-1	535 (600-1)	580-1½ 535 (600-1½)	720-2¼ 675 (700-2¼)



NE-1 31 DEC 2020 to 28 JAN 2021