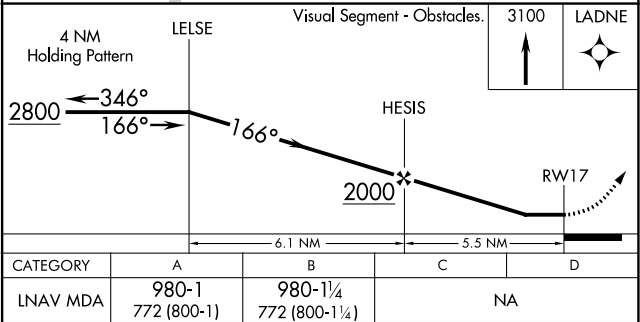
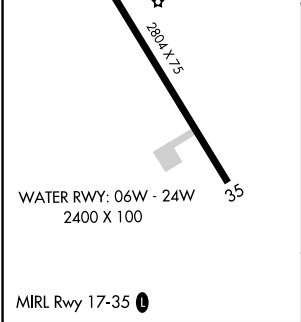
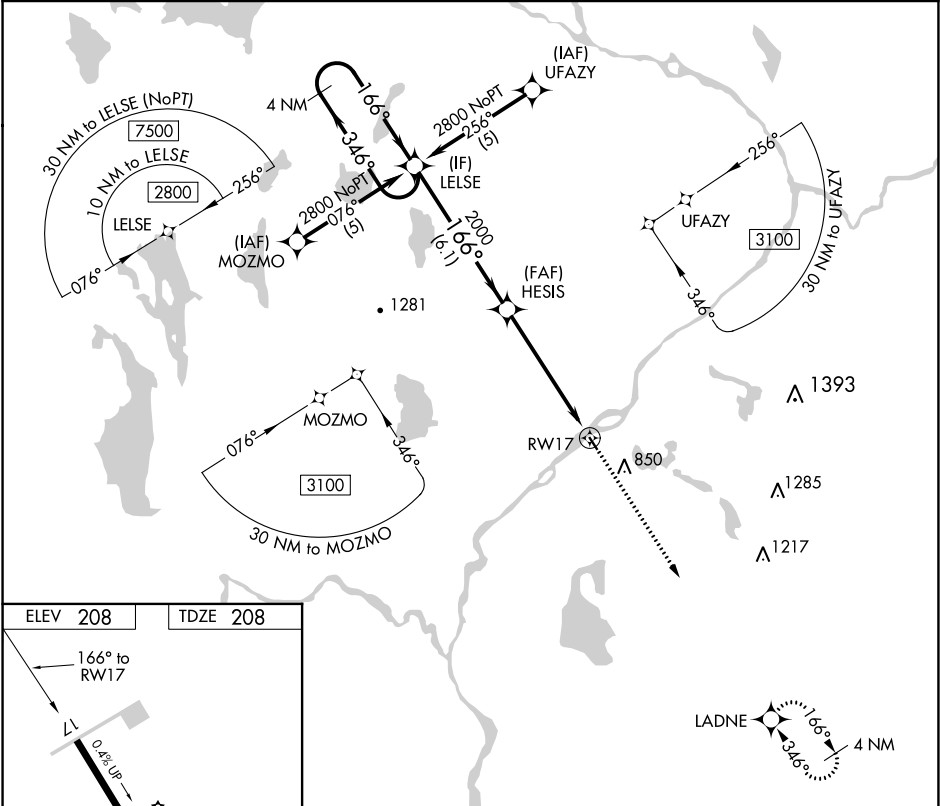


APP CRS	Rwy Idg	2804
166°	TDZE	208
	Apt Elev	208

RNAV (GPS) RWY 17
LINCOLN RGNL (L.R.G)

RNP APCH.	Use Millinocket Muni altimeter setting, when not received use Bangor altimeter setting and increase all MDA 20 feet. Procedure NA at night. Rwy 17 helicopter visibility reduction below 1 SM NA.	MISSED APPROACH: Climb to 3100 direct LADNE and hold.
-----------	--	---

MLT ASOS 135.225	BOSTON CENTER 124.25 290.5	UNICOM 122.8 (CTAF) 0
---------------------	-------------------------------	--------------------------



NE-1, 31 DEC 2020 to 28 JAN 2021

NE-1, 31 DEC 2020 to 28 JAN 2021