

APP CRS	Rwy Idg	3998
028°	TDZE	268
	Apt Elev	270

RNAV (GPS) RWY 3

CENTRAL MAINE AIRPORT OF NORRIDGEWOCK (OWK)

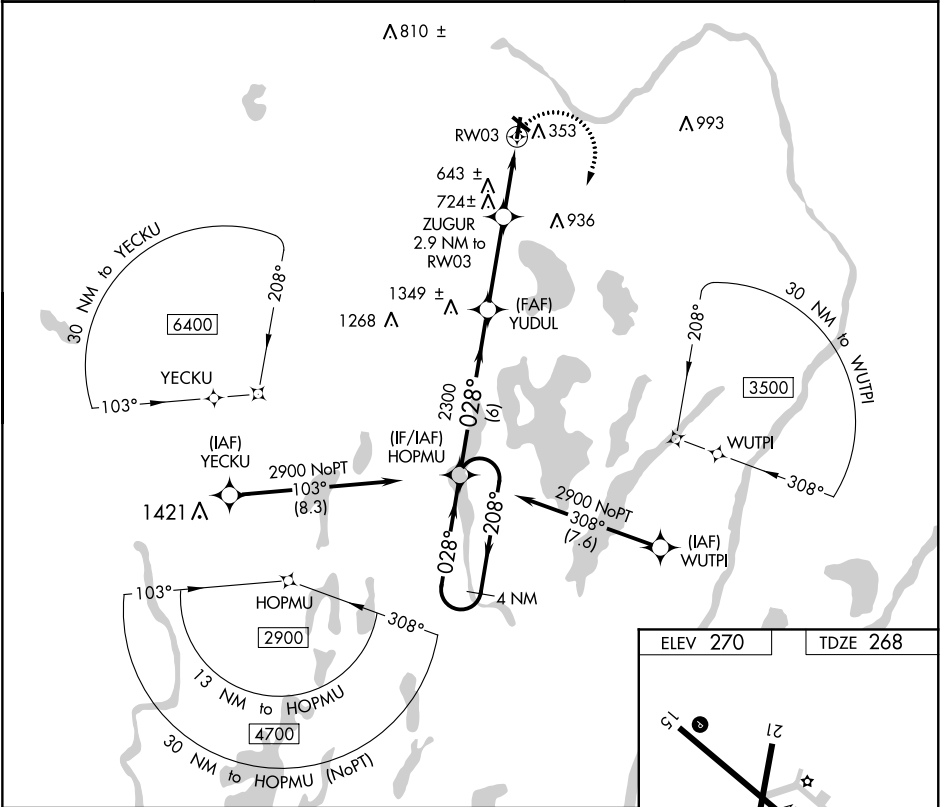
▼

NA

DME/DME RNP-0.3 NA. When local altimeter setting not received, use Augusta State altimeter setting and increase all MDA 80 feet; increase LNAV Cat B visibility ¼ mile and Cat C visibility ½ mile and Circling Cat B visibility ¼ mile and Cat C visibility ½ mile.
Procedure NA at night. Helicopter visibility reduction below 1 SM NA.

MISSED APPROACH: Climbing right turn to 2900 direct HOPMU and hold.

AWOS-AV 122.8	PORTLAND APP CON ★ 128.35 299.2	UNICOM 122.8 (CTAF) 0
------------------	------------------------------------	--------------------------



4 NM Holding Pattern HOPMU		Visual Segment - Obstacles.		2900	HOPMU
2900 ← 208°		028° →		2300	
		YUDUL		ZUGUR 2.9 NM to RW03	
		1220		RW03	
		6 NM		3.4 NM	
				2.9 NM	
CATEGORY	A	B	C	D	
LNAV MDA	980-1	712 (800-1)	980-2 712 (800-2)	NA	
CIRCLING	980-1	710 (800-1)	1080-2¼ 810 (900-2¼)	NA	

