

WAAS
CH 77740
W15A

APP CRS
148°

Rwy Idg
TDZE
Apt Elev

4000
270
270

RNAV (GPS) RWY 15

CENTRAL MAINE ARPT OF NORRIDGEWOCK (OWK)

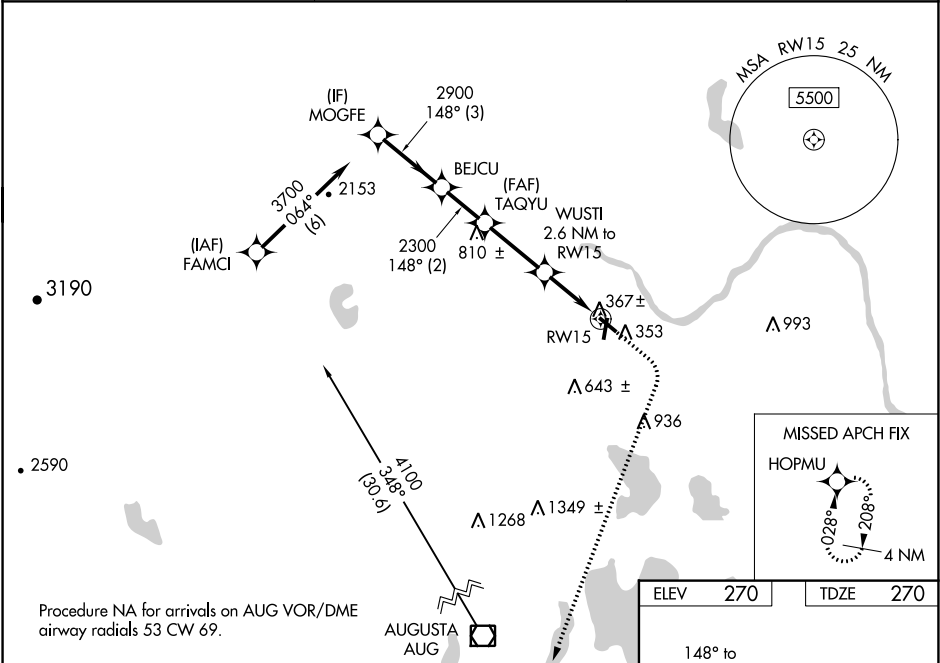
▼

▲ NA

For uncompensated Baro-VNAV systems, LNAV/VNAV NA below -15°C (5°F) or above 54°C (130°F). Baro-VNAV and VDP NA when using Augusta State altimeter setting. Rwy 15 helicopter visibility reduction below ¾ SM NA. DME/DME RNP-0.3 NA. When local altimeter setting not received, use Augusta State altimeter setting; increase LPV DA to 607 feet, LNAV/VNAV DA 659 feet and LNAV/VNAV visibility all Cats ½ SM. Increase all MDA 80 feet and LNAV Cat C visibility ¼ SM and Circling Cat C visibility ½ SM. Circling Rwy 3, 21, 33 NA at night.

MISSED APPROACH:
Climb to 800 then climbing right turn to 2900 direct HOPMU and hold.

AWOS-AV 122.8	PORTLAND APP CON ★ 128.35 299.2	UNICOM 122.8 (CTAF) 0
------------------	------------------------------------	--------------------------



MOGFE		VGSI and descent angles not coincident (VGSI Angle 3.00/TCH 43).			800	2900	HOPMU
3700		148°					
GP 3.50° TCH 40		2900					
3 NM		2 NM		2.8 NM		1.6 NM	
1 NM							
CATEGORY	A	B	C	D			
LPV DA	540-1		270 (300-1)		NA		
LNAV/ VNAV DA	592-1		322 (400-1)		NA		
LNAV MDA	680-1		410 (500-1)		680-1 1/8 410 (500-1 1/8)		NA
CIRCLING	800-1		960-1		1080-2 1/4		NA
	530 (600-1)		690 (700-1)		810 (900-2 1/4)		