

WAAS CH 48900 W01A	APP CRS 005°	Rwy Idg 3001 TDZE 228 Apt Elev 228
--	------------------------	---

RNAV (GPS) RWY 1

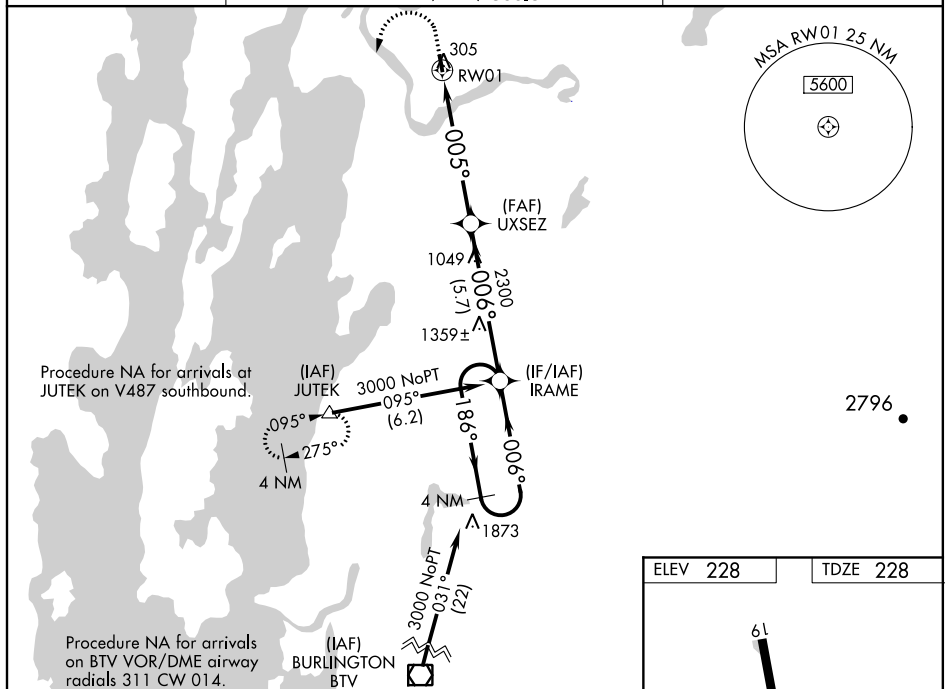
FRANKLIN COUNTY STATE (FSO)

▼ Circling to Rwy 19 NA at night. Baro-VNAV NA when using Plattsburgh altimeter setting. For uncompensated Baro-VNAV systems, LNAV/VNAV NA below -15°C (5°F) or above 54°C (130°F). When VGSi inop, Straight-in/Circling Rwy 1 procedure NA at night. DME/DME RNP-0.3 NA. Visibility reduction by helicopters NA. When local altimeter setting not received, use Plattsburgh altimeter setting and increase all DA 55 feet and all MDA 60 feet: increase LNAV/VNAV all Cats and LNAV and Circling Cat B visibilities ¼ mile.

MISSED APPROACH: Climb to 1100 then climbing left turn to 3000 direct JUTEK and hold.

AWOS-3
119.025

BURLINGTON APP CON ★
121.1 (EAST) 278.8
(WEST) 360.8

UNICOM
122.8 (CTAF) **L**

ELEV 228		TDZE 228
----------	--	----------

