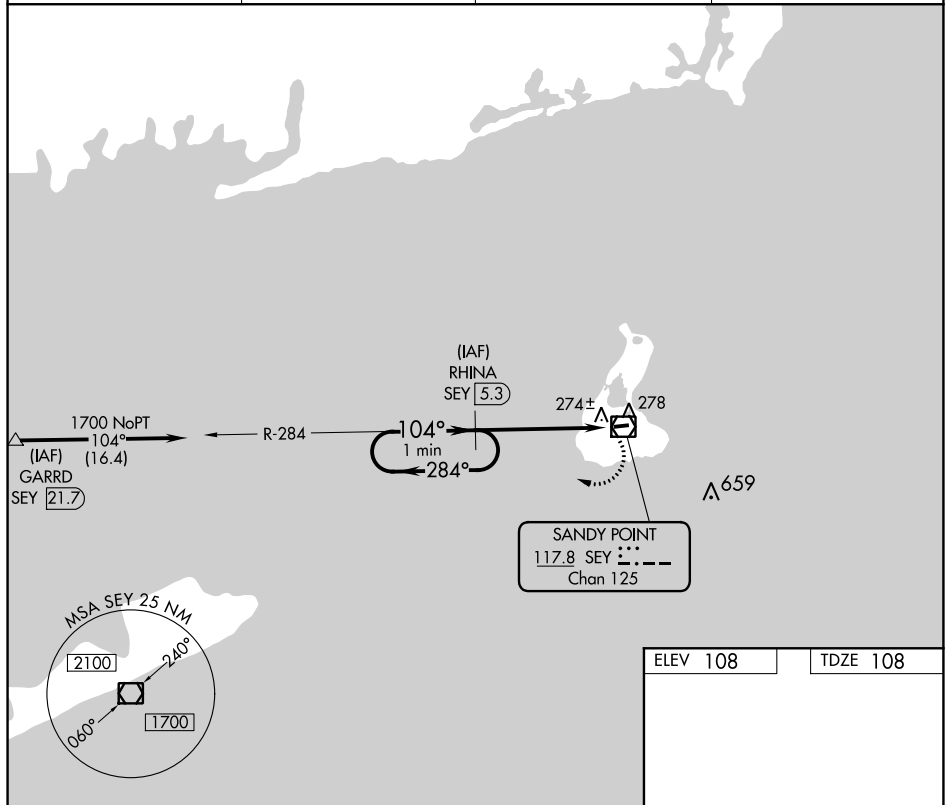


VOR/DME RWY 10
BLOCK ISLAND STATE (BID)

MISSED APPROACH: Climbing right turn to 1700 on heading 300° and SEY R-284 to RHINA/SEY 5.3 DME and hold.

AWOS-3PT 134.775	PROVIDENCE APP CON ★ 125.75 319.2	CLNC DEL 120.1	UNICOM 123.0 (CTAF) 0
----------------------------	---	--------------------------	---------------------------------



One Minute Holding Pattern

RHINA
SEY 5.3

1700
hdg 300°
SEY R-284
RHINA
SEY 5.3

1700 ← 284°
104° →

VGSI and descent angles not coincident
(VGSI Angle 3.00/TCH 40).

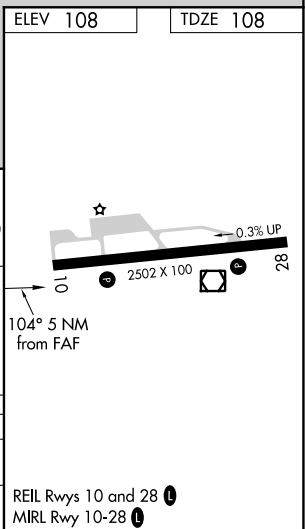
2.91
TCH 45

104°

SEY 1.6
VOR/DME
SEY 0.3

3.6 NM

CATEGORY	A	B	C	D
S-10	580-1	472 (500-1)	580-1¼ 472 (500-1¼)	NA
CIRCLING	640-1	532 (600-1)	640-1½ 532 (600-1½)	NA



NE-1, 31 DEC 2020 to 28 JAN 2021