

WAAS
CH **50237**
W06A

APP CRS
062°

Rwy Idg
TDZE
Apt Elev

3300
9
9

RNAV (GPS) RWY 6

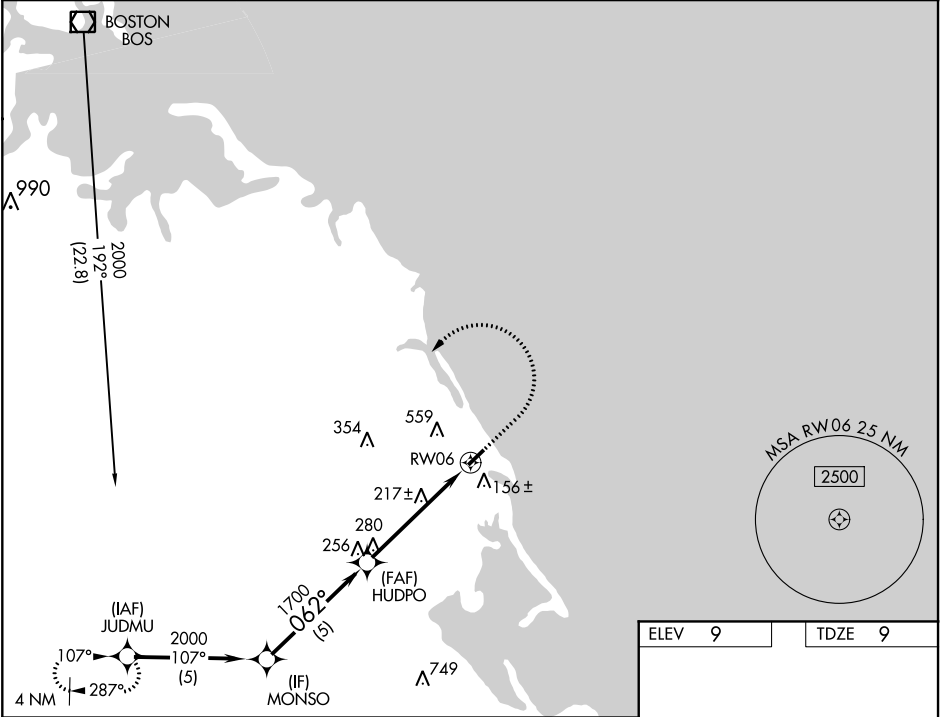
MARSHFIELD MUNI - GEORGE HARLOW FIELD (GHG)

⚠

For uncompensated Baro-VNAV systems, LNAV/VNAV NA below -15°C (5°F) or above 54°C (130°F). DME/DME RNP-0.3 NA. Baro-VNAV and VDP NA when using Plymouth altimeter setting. Helicopter visibility reduction below ¾ SM NA. When local altimeter setting not received, use Plymouth altimeter setting and increase all DA 47 feet and all MDA 60 feet, increase LPV and LNAV/VNAV all Cnts visibility ½ mile.

MISSED APPROACH: Climb to 800 then climbing left turn to 2000 direct JUDMU and hold.

AWOS-3 120.0	BOSTON APP CON 124.1	UNICOM 122.8 (CTAF) 0
------------------------	--------------------------------	---------------------------------



MONSO

HUDPO

RW06

2000

1700

800

GP 3.00°
TCH 43

062°

1700

1.4 NM to RW06

*LNAV only

5 NM

3.8 NM

1.4 NM

CATEGORY	A	B	C	D
LPV DA	282-7/8	273 (300-7/8)		NA
LNAV/VNAV DA	445-1½	436 (500-1½)		NA
LNAV MDA	480-1	471 (500-1)		NA
CIRCLING	500-1 491 (500-1)	880-1¼ 871 (900-1¼)		NA

