

WAAS
CH 86337
W24A

APP CRS
242°

Rwy Idg
TDZE
Apt Elev

3300
9
9

RNAV (GPS) RWY 24

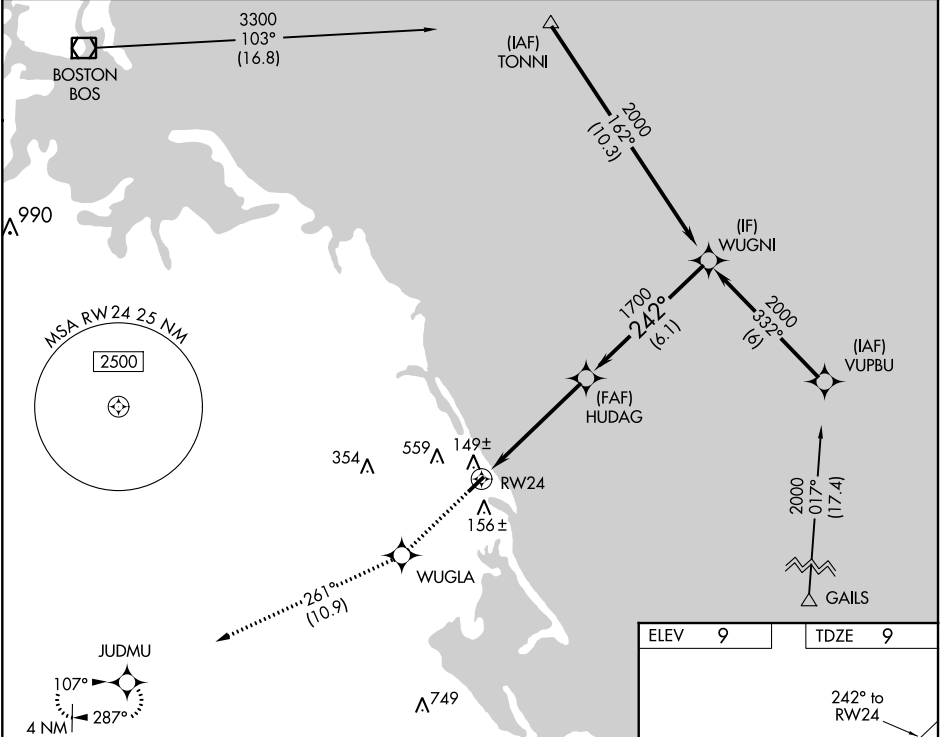
MARSHFIELD MUNI - GEORGE HARLOW FIELD (GHG)

⚠

For uncompensated Baro-VNAV systems, LNAV/VNAV NA below -15°C (5°F) or above 54°C (130°F). DME/DME RNP-0.3 NA. When local altimeter setting not received, use Plymouth altimeter setting and increase all DA 47 feet, and all MDA 60 feet; increase LPV all Cats visibility ¼ mile, increase LNAV/VNAV all Cats visibility ⅓ mile. Baro VNAV and VDP NA when using Plymouth altimeter setting. Helicopter visibility reduction below ¾ SM NA.

MISSED APPROACH: Climb to 2000 direct WUGLA and on track 261° to JUDMU and hold.

AWOS-3 120.0	BOSTON APP CON 124.1	UNICOM 122.8 (CTAF) 0
-----------------	-------------------------	--------------------------



2000

WUGLA

JUDMU

* LNAV only.

* 1.1 NM to RW24

HUDAG

WUGNI

1700

2000

1700

242°

GP 3.00°

TCH 40

1.1 NM

4.1 NM

6.1 NM

CATEGORY	A	B	C	D
LPV DA	359-1⅞	350 (400-1⅞)		NA
LNAV/VNAV DA	403-1⅞	394 (400-1⅞)		NA
LNAV MDA	400-1	391 (400-1)		NA
CIRCLING	500-1 491 (500-1)	880-1¼ 871 (900-1¼)		NA

