

APP CRS
051°

Rwy Idg
TDZE
Apt Elev

N/A
N/A
733

RNAV (GPS)-A

MORRISVILLE-STOWE STATE (MVL)

RNP APCH.

⚠

⚠

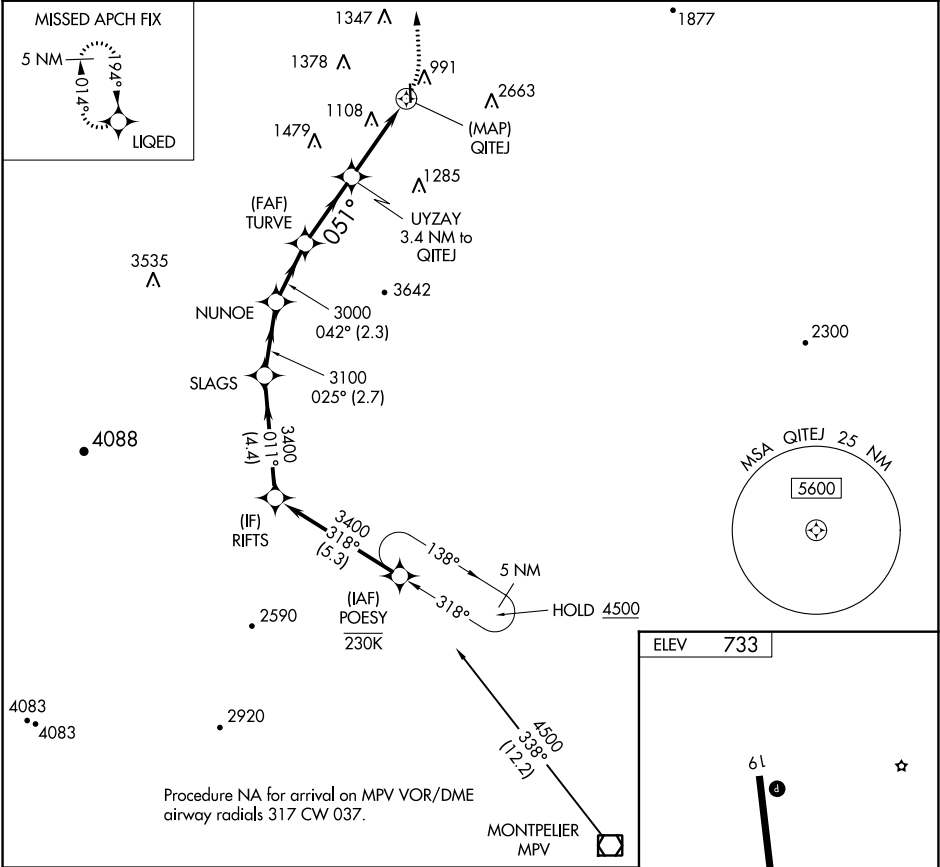
❄

Circling NA for Cat C east of Rwy 1-19. When local altimeter setting not received, use Burlington altimeter setting and increase all MDAs 120 feet.

-20°C

MISSED APPROACH: Climbing left turn to 5600 direct LIQED and hold, continue climb-in-hold to 5600.

ASOS 135.625	BOSTON CENTER 135.7 282.2	UNICOM 122.8 (CTAF)
------------------------	-------------------------------------	-------------------------------



RIFTS	SLAGS	NUNOE	TURVE	UYZAY	QITEJ
3400	3400	3100	3000	1980	
011°	025°	042°	051°	3.4 NM to QITEJ	
4.4 NM	2.7 NM	2.3 NM	2.9 NM	3.4 NM	
CATEGORY	A	B	C	D	
CIRCLING	1620-1¼ 887 (900-1¼)	1780-1½ 1047 (1100-1½)	1980-3 1247 (1300-3)	NA	

REIL Rwy 1 and 19

HIRL Rwy 1-19