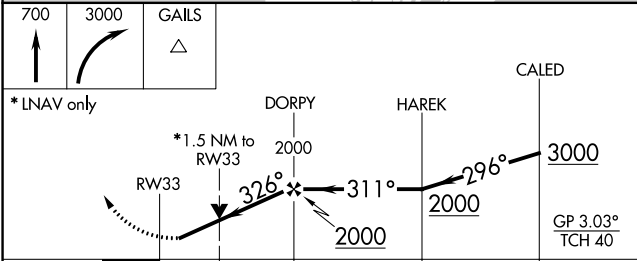
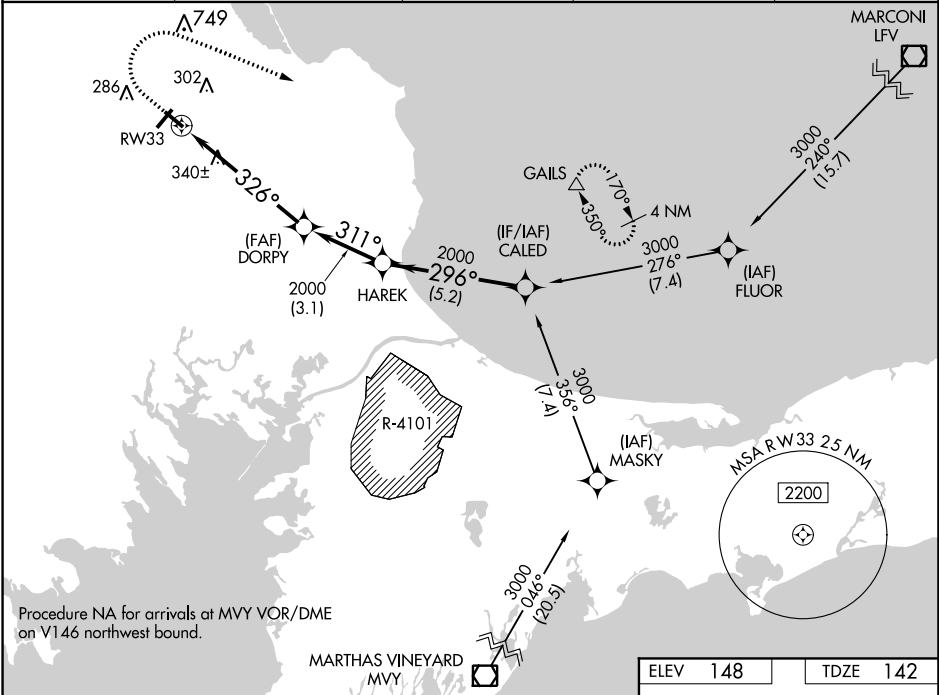


WAAS CH <b>63241</b> <b>W33A</b>	APP CRS <b>326°</b>	Rwy Idg TDZE <b>142</b> Apt Elev <b>148</b>	<b>4350</b>
--	------------------------	---	-------------

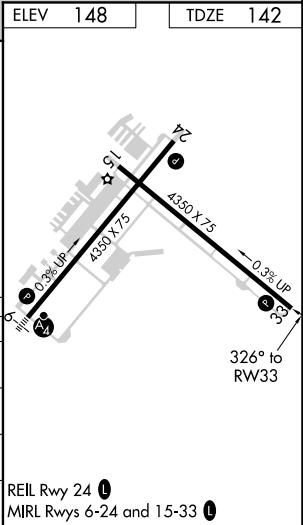
RNAV (GPS) RWY 33  
PLYMOUTH MUNI (PYM)

RNP APCH.	MISSED APPROACH: Climb to 700 then climbing right turn to 3000 direct GAILS and hold.
<div><div></div><div></div></div> <div>Circling Rwy 15 NA at night. Rwy 33 helicopter visibility reduction below ¾ SM NA. For uncompensated Baro-VNAV systems, LNAV/VNAV NA below -18°C or above 54°C.</div>	

ASOS <b>135.625</b>	BOSTON APP CON ★ <b>118.2 284.6</b>	CINC DEL <b>127.75</b>	UNICOM <b>122.725 (CTAF)</b>	<b>122.9 0</b>
------------------------	--	---------------------------	---------------------------------	----------------



CATEGORY	A	B	C	D
LPV DA	393-¾	251 (300-¾)		NA
LNAV/VNAV DA	486-1	344 (400-1)		NA
LNAV MDA	660-1	518 (600-1)	660-1¾ 518 (600-1¾)	NA
CIRCLING	660-1	512 (600-1)	760-1¾ 612 (700-1¾)	NA



NE-1, 31 DEC 2020 to 28 JAN 2021

NE-1, 31 DEC 2020 to 28 JAN 2021