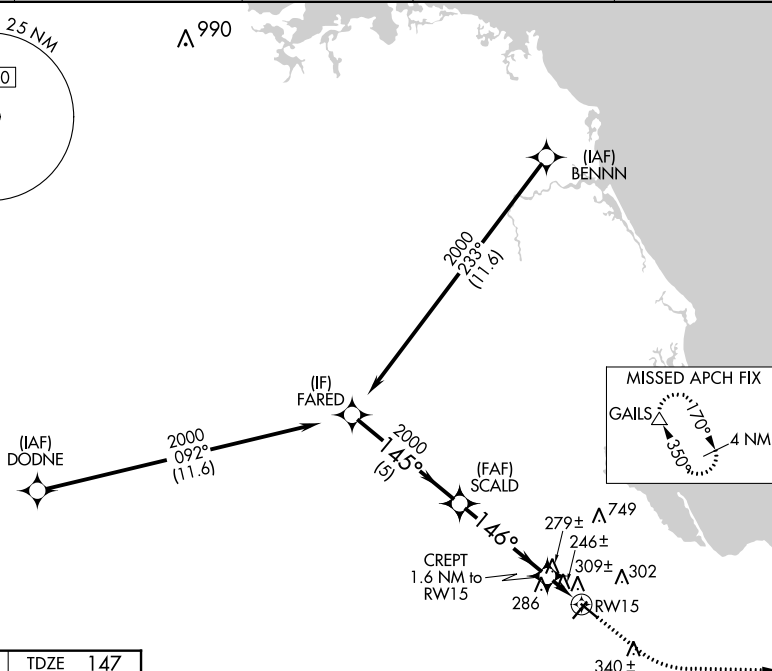
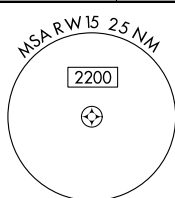


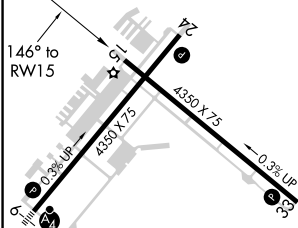
RNAV (GPS) RWY 15
PLYMOUTH MUNI (PYM)

MISSED APPROACH: Climb to 600 then climbing left turn to 2000 direct GAILS and hold.

122.9 L



TDZE 141



41°55'N-70°44'W

PLYMOUTH MUNI (PYM)

RNAV (GPS) RWY 15

NE-1, 31 DEC 2020 to 28 JAN 2021