

APP CRS
068°

Rwy Idg
TDZE
76

4010
Apt Elev
81

RNAV (GPS) RWY 7
WESTERLY STATE (WST)

▼

Inoperative table does not apply. DME/DME RNP-0.3 NA.

▲

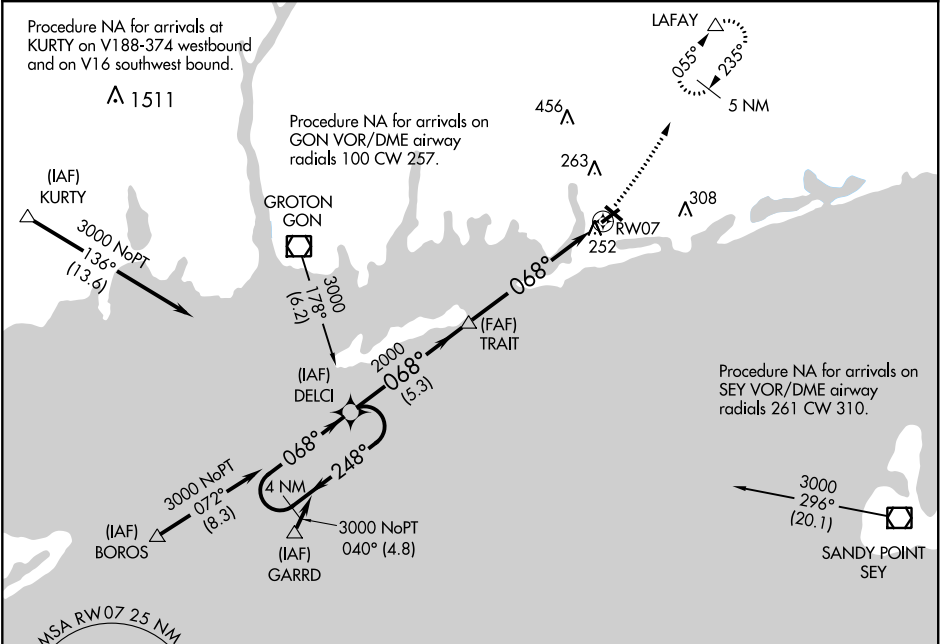
NA

Rwy 7 Straight-in and Circling and Circling Rwy 14 and 32 NA at night.

MALSF

MISSED APPROACH: Climbing left turn to 2100 direct LAFAY and hold.

ASOS 132.375	PROVIDENCE APP CON ★ 119.45 319.2	UNICOM 123.0 (CTAF) 0
------------------------	---	---------------------------------



ELEV 81

TDZE 76

CATEGORY	A	B	C	D
RNAV MDA	520-1	444 (500-1)	520-1¼ 444 (500-1¼)	520-1½ 444 (500-1½)
CIRCLING	580-1	499 (500-1)	580-1½ 499 (500-1½)	720-2 639 (700-2)

REIL Rwy 14, 25 and 32 0
MRL Rwy 7-25 and 14-32 0