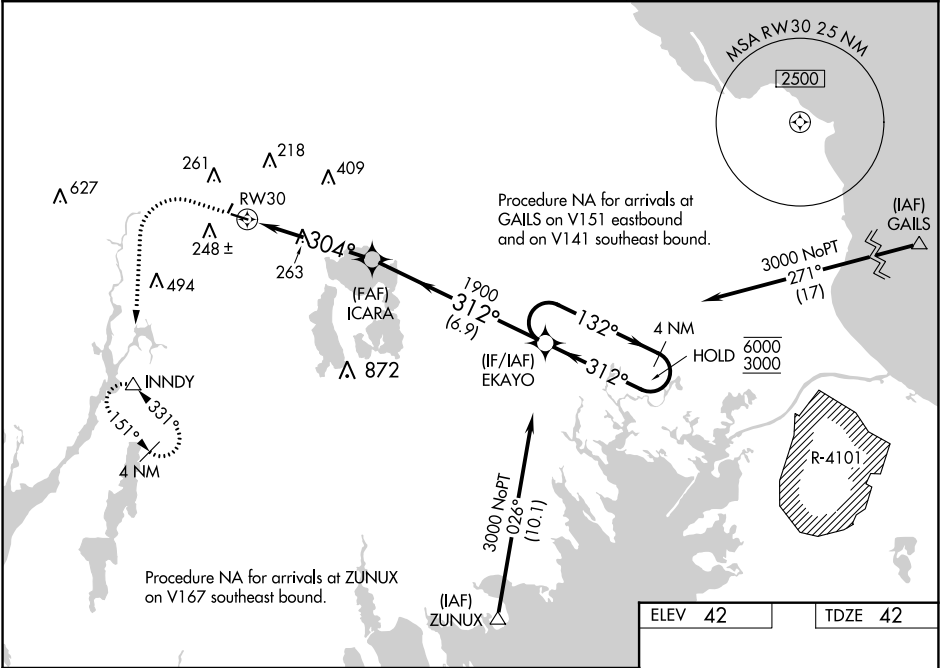


WAAS CH <b>58139</b> <b>W30A</b>	APP CRS <b>304°</b>	Rwy Idg TDZE Apt Elev <b>42</b> <b>42</b>
--	------------------------	---

RNAV (GPS) RWY 30

TAUNTON MUNI-KING FIELD (TAN)

RNP APCH. <div><div></div><div>Circling NA to Rws 4 and 22. Rwy 30 helicopter visibility reduction below 1 SM NA. For uncompensated Baro-VNAV systems, LNAV/VNAV NA below -23°C or above 46°C.</div></div>		MISSED APPROACH: (Do not exceed 210K until INNDY) Climb to 600 then climbing left turn to 3000 direct INNDY and hold. Continue climb in hold to 3000.
ASOS <b>132.675</b>	PROVIDENCE APP CON ★ <b>128.7 269.525</b>	UNICOM <b>122.7 (CTAF) 0</b>



600

3000

INNDY

VGSI and RNAV glidepath not coincident (VGSI Angle 3.60/TCH 45).

EKAJO

4 NM Holding Pattern

ICARA

1900

132°

312°

6000

3000

GP 3.60°

TCH 59

4.7 NM

6.9 NM

CATEGORY	A	B	C	D
LPV DA	388-1	346 (400-1)		NA
LNAV/VNAV DA	526-1 <sup>3</sup> / <sub>8</sub>	484 (500-1 <sup>3</sup> / <sub>8</sub> )		NA
LNAV MDA	600-1	558 (600-1)	600-1 <sup>5</sup> / <sub>8</sub> 558 (600-1 <sup>3</sup> / <sub>8</sub> )	NA
CIRCLING	600-1	558 (600-1)	660-1 <sup>3</sup> / <sub>4</sub> 618 (700-1 <sup>3</sup> / <sub>4</sub> )	NA

