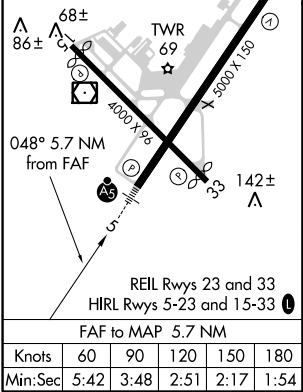
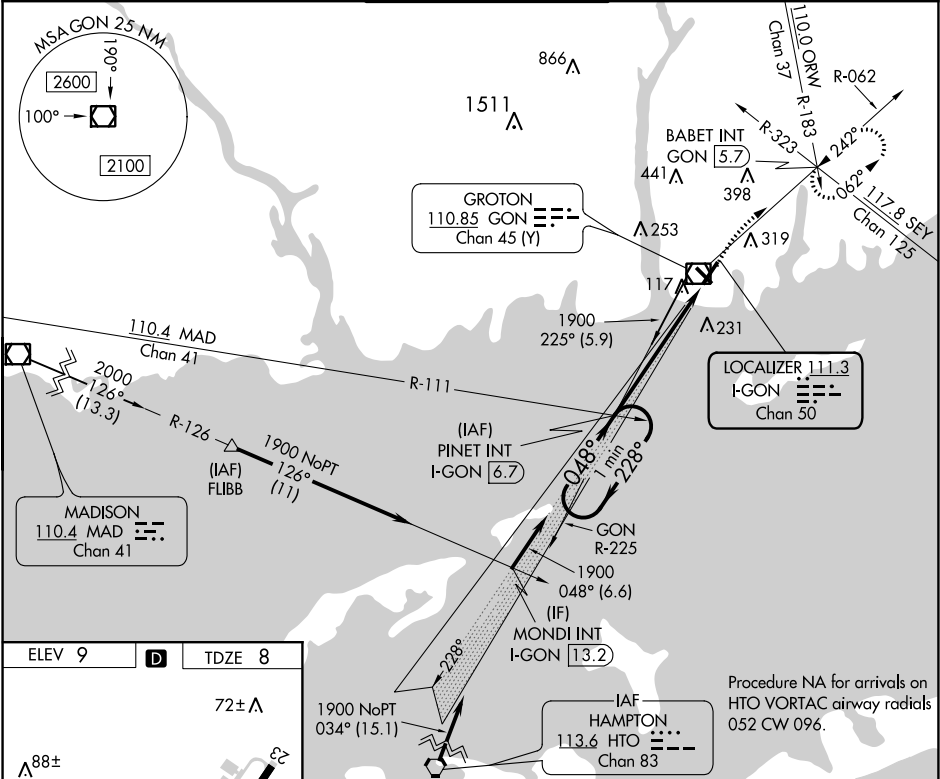


LOC/DME I-GON	APP CRS	Rwy Idg	5000
<b>111.3</b>	<b>048°</b>	TDZE	8
Chan 50		Apt Elev	9

ILS or LOC RWY 5  
GROTON-NEW LONDON (GON)

 Night landing: Rwy 15 NA. For inoperative MALSR, increase S-LOC 5 Cat C/D visibility to 1 3/4. **RVR 1800 authorized with the use of FD or AP or HUD to DA.	 MALSR	MISSED APPROACH: Climbing right turn to 2000 on GON VOR/DME R-062 to BABET INT and hold, continue climb-in-hold to 2000.
--	-----------	--

ATIS <b>127.0</b>	PROVIDENCE APP CON ★ <b>125.75 319.2</b>	GROTON TOWER ★ <b>125.6 (CTAF) 0 236.775</b>	GND CON <b>121.65 236.775</b>	CLNC DEL ★ <b>119.85</b>
----------------------	---	---	----------------------------------	-----------------------------



One Minute Holding Pattern				
PINET INT I-GON [6.7]				
2000				
BABET INT				
*I-GON [2.4]				
*LOC only.				
I-GON [0.9]				
4.3 NM				
1.4 NM				
CATEGORY	A	B	C	D
S-ILS 5	**208/24 200 (200-1/2)			
S-LOC 5	500/24	492 (500-1/2)	500/50	492 (500-1)
CIRCLING	580-1 571 (600-1)	620-1 611 (700-1)	620-1 3/4 611 (700-1 3/4)	620-2 611 (700-2)

NE-1, 31 DEC 2020 to 28 JAN 2021

NE-1, 31 DEC 2020 to 28 JAN 2021