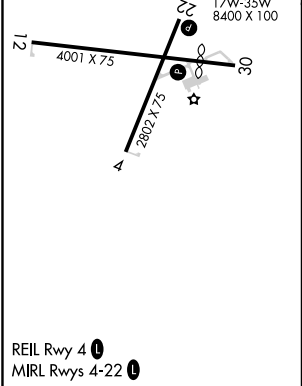
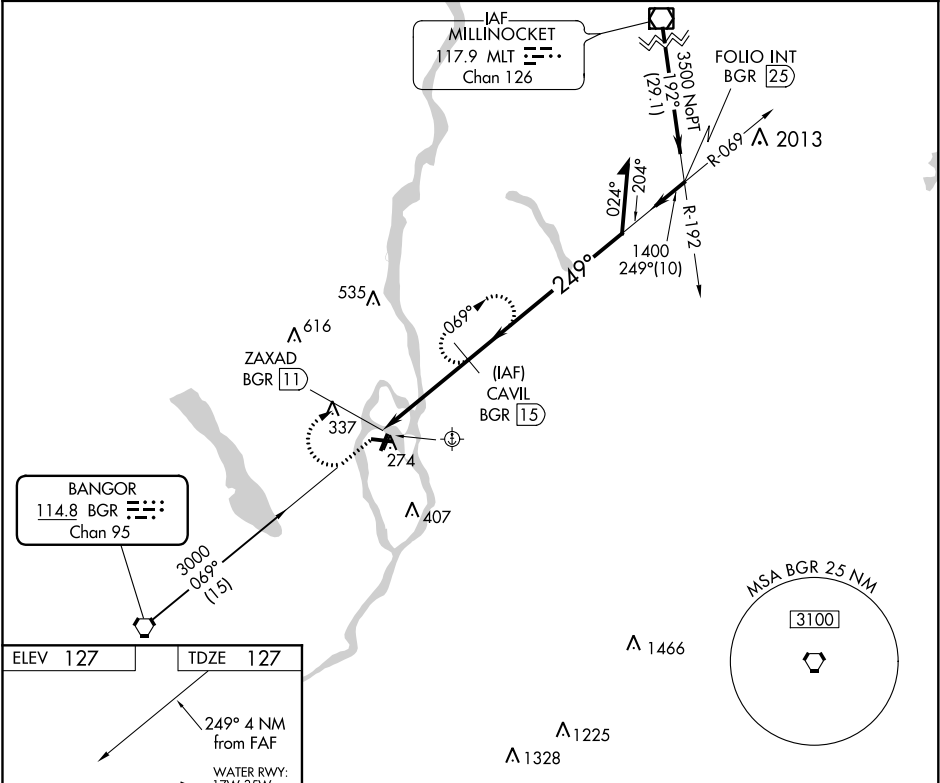


VORTAC BGR	APP CRS	Rwy Idg	2802
114.8	249°	TDZE	127
Chan 95		Apt Elev	127

VOR/DME RWY 22  
DEWITT FIELD, OLD TOWN MUNI (OLD)

<p>▼ Use Bangor Intl altimeter setting. ▲ NA Procedure NA at night. Helicopter visibility reduction below 1 SM NA.</p>	<p>MISSED APPROACH: Climb to 1300 then climbing right turn to 3000 via BGR R-069 to CAVIL 15 DME and hold.</p>
--	--

BGR ASOS 127.75	BANGOR APP CON 118.925 239.3	UNICOM 122.8 (CTAF) 0
--------------------	---------------------------------	--------------------------



1300	3000	CAVIL BGR 15		
↑	BGR R-069			
		CAVIL BGR 15	Remain within 10 NM	
		ZAXAD BGR 11	069°	3000
		1400	249°	
		4 NM		
CATEGORY	A	B	C	D
S-22	600-1 473 (500-1)		600-1¼ 473 (500-1¼)	NA
CIRCLING	640-1 513 (600-1)	700-1 573 (600-1)	800-2 673 (700-2)	NA

NE-1, 31 DEC 2020 to 28 JAN 2021

NE-1, 31 DEC 2020 to 28 JAN 2021