

APP CRS
264°

Rwy Idg
5286

TDZE
533

Apt Elev
545

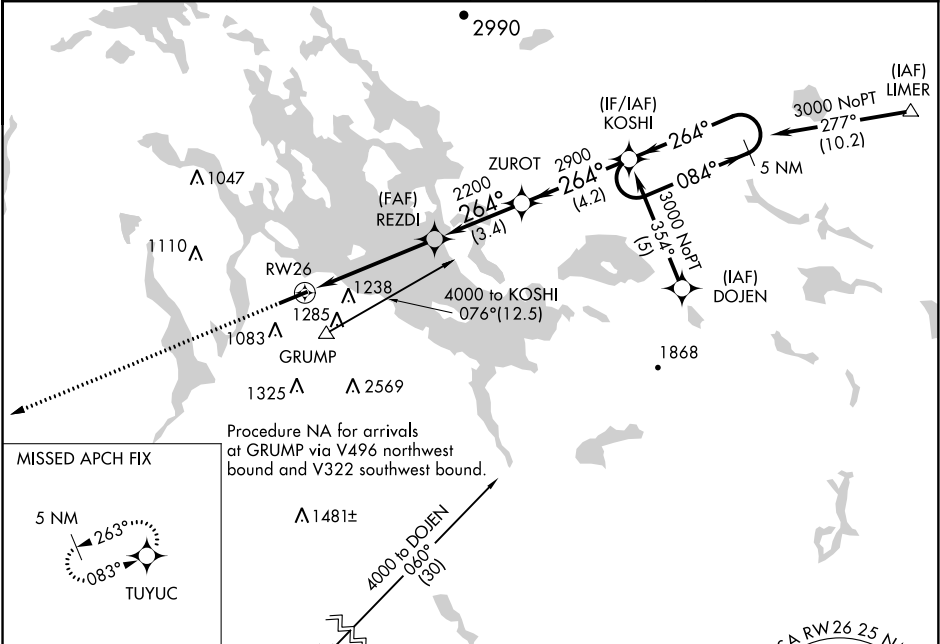
RNAV (GPS) RWY 26

LACONIA MUNI (LCI)

Helicopter visibility reduction below 1 SM NA. DME/DME RNP-0.3 NA. If local altimeter setting not received, use Concord altimeter setting and increase all MDAs 80 feet. Night Landing: Rwy 26 NA.

MISSED APPROACH: Climb to 4400 direct TUYUC and hold, continue climb-in-hold to 4400.

AWOS-3PT 133.525	BOSTON APP CON 134.75 254.25	CLNC DEL 119.85	UNICOM 123.0 (CTAF) 0
----------------------------	--	---------------------------	---------------------------------



ELEV 545

D

TDZE 533

REIL Rwy 26 0

HIRL Rwy 8-26 0

CONCORD CON

Procedure NA for arrivals at CON VOR/DME via V322 southwest bound and V93 west bound.

4400

TUYUC

Visual Segment - Obstacles.

KOSHI

5 NM Holding Pattern

RW26

REZDI

ZUROT

2200

2900

084°

264°

3000

5 NM

3.4 NM

4.2 NM

CATEGORY	A	B	C	D
LNAV MDA	1420-1¼ 887 (900-1¼)	1420-2¾ 887 (900-2¾)	1420-3 887 (900-3)	1420-3 887 (900-3)
C CIRCLING	1420-1¼ 875 (900-1¼)	1600-1½ 1055 (1100-1½)	2160-3 1615 (1700-3)	2860-3 2315 (2400-3)

LACONIA, NEW HAMPSHIRE

Orig-C 08OCT20

43°34'N-71°25'W

LACONIA MUNI (LCI)

RNAV (GPS) RWY 26