

WAAS CH 42601 W06A	APP CRS 056°	Rwy Idg TDZE Apt Elev	5504 58 67
--	------------------------	-----------------------------	---------------------------------------

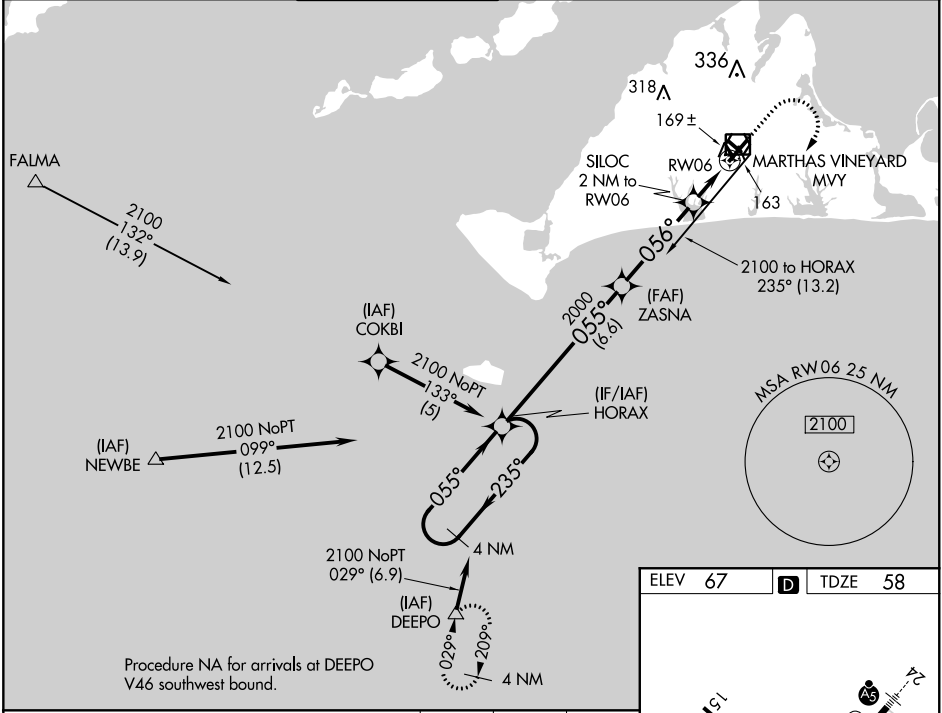
RNAV (GPS) RWY 6
MARTHA'S VINEYARD (MVY)

RNP APCH.

▼ Rwy 6 helicopter visibility reduction below ¾ SM NA. VDP and Baro-VNAV NA when using Hyannis altimeter setting. For uncompensated Baro-VNAV systems, LNAV/VNAV NA below -15°C or above 43°C. When local altimeter setting not received, use Hyannis altimeter setting and increase LPV DA to 362 feet and all Cats visibility by ¼ SM, increase LNAV/VNAV DA to 408 feet and all Cats visibility ⅛ SM; increase all MDAs 60 feet and Cats C and D visibility ¼ SM. Circling Rwy 15 NA at night.

MISSED APPROACH:
Climb to 800 then climbing right turn to 3000 direct DEEPO and hold.

ATIS 126.25	BOSTON APP CON ★ 119.7	VINEYARD TOWER ★ 121.4 (CTAF) 0	GND CON 124.35	CLNC DEL 124.35	CLNC DEL 119.7 (When twr closed)	UNICOM 122.95
-----------------------	----------------------------------	--	--------------------------	---------------------------	---	-------------------------



4 NM Holding Pattern

2100

← 235°

055° →

GP 3.00°
TCH 50

HORAX

2000

055°

056°

2000

*740

ZASNA

2000

056°

6.6 NM

4 NM

1 NM

1 NM

CATEGORY

A

B

C

D

LPV DA

308-³/₄

250 (300-³/₄)

LNAV/VNAV DA

354-1

296 (300-1)

LNAV MDA

420-1

362 (400-1)

CIRCLING

500-1
433 (500-1)

540-1
473 (500-1)

700-1³/₄
633 (700-1³/₄)

780-2¹/₄
713 (800-2¹/₄)

800

3000

DEEPO

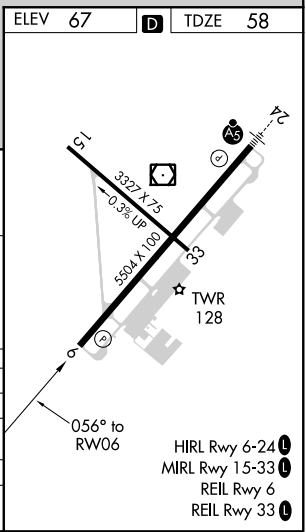
SILOC

2 NM to RW06

*1 NM to RW06

*LNAV only

RW06



NE-1, 31 DEC 2020 to 28 JAN 2021

NE-1, 31 DEC 2020 to 28 JAN 2021