

WAAS CH 56629 W33A	APP CRS 326°	Rwy Idg TDZE Apt Elev	3327 66 67
--	------------------------	-----------------------------	---------------------------------------

RNAV (GPS) RWY 33

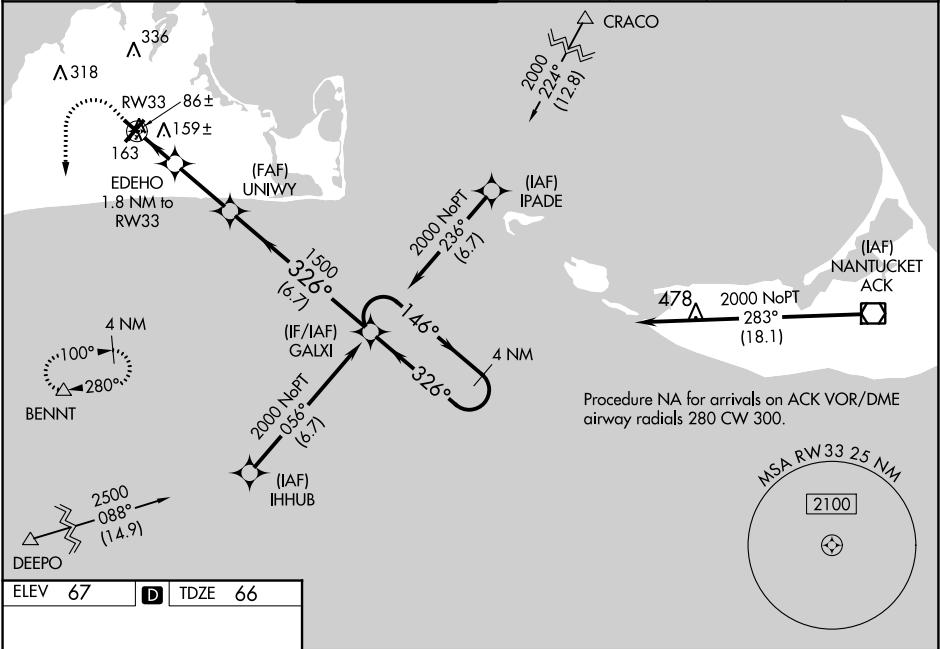
MARTHA'S VINEYARD (MVY)

RNP APCH.

Baro-VNAV NA when using Hyannis altimeter setting. For uncompensated Baro-VNAV systems, LNAV/VNAV NA below -15°C or above 43°C. Rwy 33 helicopter visibility reduction below ¾ SM NA. When local altimeter setting not received, use Hyannis altimeter setting and increase LPV DA to 370 feet, LNAV/VNAV DA to 393 feet, and all visibility ½ SM, increase all MDA 60 feet and Cat C and D visibilities ¼ SM. Circling Rwy 15 NA at night. VDP NA with Hyannis altimeter setting.

MISSED APPROACH:
Climb to 1400 then climbing left turn to 2000 direct BENNT and hold.

ATIS 126.25	BOSTON APP CON ★ 119.7	VINEYARD TOWER ★ 121.4 (CTAF) 0	GND CON 124.35	CLNC DEL 124.35	CLNC DEL 119.7 (When twr closed)	UNICOM 122.95
-----------------------	----------------------------------	--	--------------------------	---------------------------	---	-------------------------



ELEV 67 **D** TDZE 66

HIRL Rwy 6-24 **0**

MIRL Rwy 15-33 **0**

REIL Rwy 6

REIL Rwy 33 **0**

	1400	2000	BENNT	
	↑	↻	△	
	*LNAV only.			
	1 NM 0.8 NM 2.6 NM 6.7 NM			
CATEGORY	A	B	C	D
LPV DA		316-1	250 (300-1)	
LNAV/ VNAV DA		339-1	273 (300-1)	
LNAV MDA		420-1	354 (400-1)	
C CIRCLING	500-1 433 (500-1)	540-1 473 (500-1)	700-1¾ 633 (700-1¾)	780-2¼ 713 (800-2¼)