

WAAS CH 48804 W24A	APP CRS 236°	Rwy Idg TDZE Apt Elev	5504 63 67
--	------------------------	-----------------------------	---------------------------------------

RNAV (GPS) RWY 24

MARTHA'S VINEYARD (MVY)

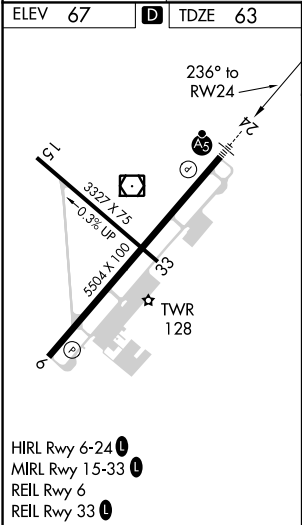
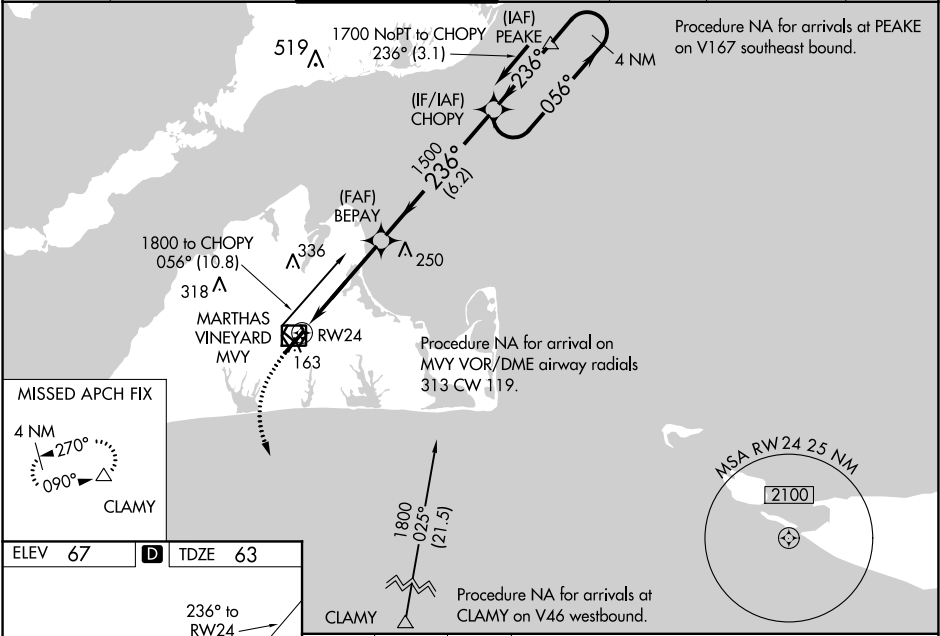
⚠

For uncompensated Baro-VNAV systems, LNAV/VNAV NA below -14°C (7°F) or above 54°C (130°F). DME/DME RNP-0.3 NA. When local altimeter setting not received, use Hyannis altimeter setting and increase all DA 54 feet and all MDA 60 feet; increase LNAV/VNAV all Cats visibility to RVR 5200; increase LNAV Cats C/D visibility to RVR 5000; increase Circling visibility to 2 miles and D to 2 ½ mile. For inop MALSR, increase LNAV/VNAV all Cats visibility to 1½ mile. For inop MALSR using Hyannis altimeter setting, increase LPV all Cats visibility to RVR 4000, LNAV/VNAV all Cats visibility to 1½ mile and increase LNAV Cats C/D visibility to 1½ mile. VDP and Baro-VNAV NA when using Hyannis altimeter setting. Night landing: Rwy 15 NA. ** RVR 1800 authorized with use of FD or AP or HUD to DA, NA when using Hyannis altimeter setting.

MALSR

MISSED APPROACH:
Climb to 500 then climbing left turn to 2500 direct CLAMY and hold.

ATIS 126.25	BOSTON APP CON ★ 119.7	VINEYARD TOWER ★ 121.4 (CTAF)	GND CON 124.35	CLNC DEL 124.35	CLNC DEL 119.7 (When twr closed)	UNICOM 122.95
-----------------------	----------------------------------	---	--------------------------	---------------------------	---	-------------------------



500	2500	CLAMY	4 NM	Holding Pattern
*LNAV only	*1.2 NM to RW24	BEPAY	CHOPY	1700
		1500	236°	056°
		1500	236°	236°
		1.2 NM	3.2 NM	6.2 NM
CATEGORY	A	B	C	D
LPV DA		** 263/24	200 (200-½)	
LNAV/ VNAV DA		480/47	417 (500-1)	
LNAV MDA	500/24	437 (500-½)	500/40	437 (500-¾)
CIRCLING	500-1 433 (500-1)	540-1 473 (500-1)	700-1¾ 633 (700-1¾)	780-2¼ 713 (800-2¼)