

WAAS CH <b>99423</b> <b>W33A</b>	APP CRS <b>336°</b>	Rwy Idg <b>5103</b> TDZE <b>50</b> Apt Elev <b>54</b>
--	------------------------	---

RNAV (GPS) RWY 33

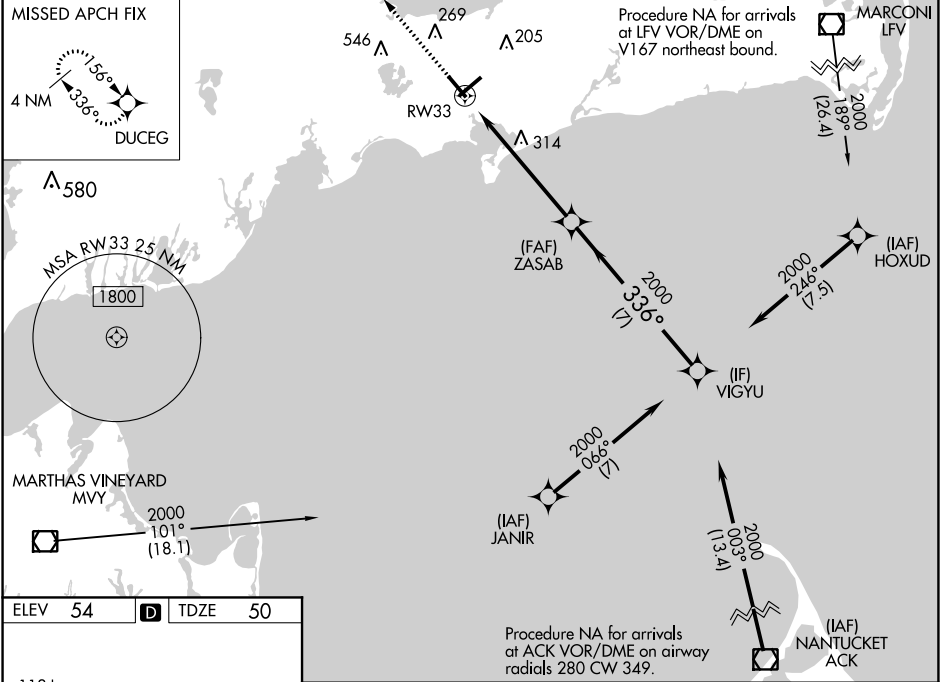
CAPE COD GATEWAY (HYA)

⚠

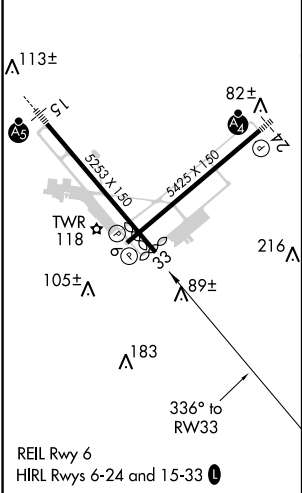
Baro-VNAV NA when using Chatham altimeter setting. For uncompensated Baro-VNAV systems, LNAV/VNAV NA below -15°C (5°F) or above 43°C (109°F). DME/DME RNP-0.3 NA. When local altimeter setting not received, use Chatham altimeter setting: increase LPV DA to 332 feet; increase LNAV/VNAV DA to 393 feet; increase all MDAs 40 feet and visibility Cats C and D ¼ SM. Helicopter visibility reduction below ¾ SM NA.

MISSED APPROACH:  
Climb to 2000 direct DUCEG and hold.

ATIS <b>123.8</b>	BOSTON APP CON★ <b>118.2 284.6</b>	HYANNIS TOWER★ <b>119.5 (CTAF) 0 257.8</b>	GND CON <b>118.45</b>	CLNC DEL <b>125.15</b>	UNICOM <b>122.95</b>
----------------------	---------------------------------------	---	--------------------------	---------------------------	-------------------------



ELEV 54	D	TDZE 50
---------	---	---------



2000

DUCEG

VGSI and RNAV glidepath not coincident (VGSI Angle 3.00/TCH 53).

ZASAB

2000

VIGYU

2000

336°

2000

GP 3.00°

TCH 60

6 NM

7 NM

CATEGORY	A	B	C	D
LPV DA		300-1	250 (300-1)	
LNAV/VNAV DA		361-1	311 (400-1)	
LNAV MDA	620-1	570 (600-1)	620-1½	570 (600-1½)
CIRCLING	620-1	566 (600-1)	860-2¼ 806 (900-2¼)	860-2½ 806 (900-2½)

NE-1, 31 DEC 2020 to 28 JAN 2021

NE-1, 31 DEC 2020 to 28 JAN 2021