

ACK VOR/DME	APP CRS	Rwy Idg	6303
116.2	240°	TDZE	48
Chan 109		Apt Elev	48

VOR RWY 24

NANTUCKET MEMORIAL (ACK)

⚠

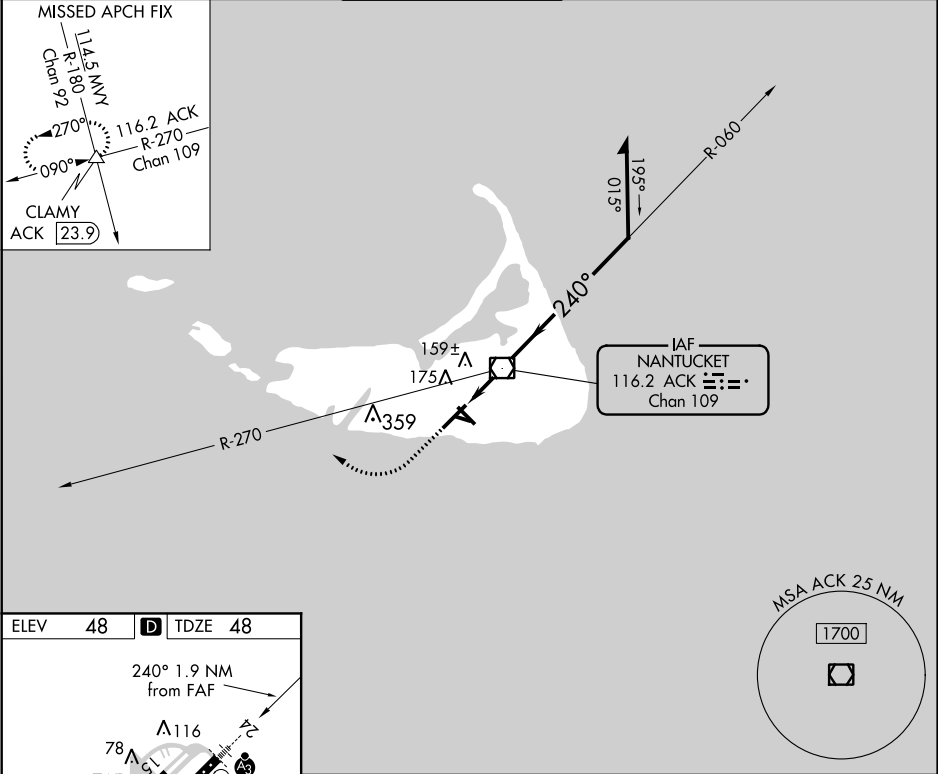
When local altimeter setting not received, use Hyannis altimeter setting and increase all MDA 80 feet; increase S-24 Cat C visibility to RVR 4000; increase Circling Cats C/D visibility ¼ SM. VDP NA when using Hyannis altimeter setting. For Inoperative SSALR, increase S-24 Cat D visibility to RVR 6000.

SSALR

MISSED APPROACH:

Climb to 700 then climbing right turn to 2500 via heading 310° and ACK VOR/DME R-270 to CLAMY INT/ACK 23.9 DME and hold.

ATIS	BOSTON APP CON★	NANTUCKET TOWER ★	GND CON	CLNC DEL	UNICOM
127.5	126.1 318.1	118.3 (CTAF) 0	132.5	119.375	122.95



ELEV 48

D

TDZE 48

TDZ/CL Rwy 24

REIL Rws 15 and 33

MIRL Rwy 15-33

HIRL Rwy 6-24

FAF to MAP 1.9 NM

Knots	60	90	120	150	180
Min:Sec	1:54	1:16	0:57	0:46	0:38

700

2500

CLAMY

ACK R-270

CLAMY

ACK VOR/DME

6000

Remain within 10 NM

hdg 310°

ACK 0.9

ACK 1.9

3.47°

TCH 48

800

1800

060°

240°

VGSI and descent angles not coincident (VGSI Angle 3.00/TCH 48).

1 NM

0.9 NM

CATEGORY	A	B	C	D
S-24	440/24 393 (400-½)			440/50 393 (400-1)
CIRCLING	480-1 433 (500-1)	500-1 453 (500-1)	720-2 673 (700-2)	720-2¼ 673 (700-2¼)