

LOC/DME I-EKW	APP CRS	Rwy Idg	7001
110.9	289°	TDZE	990
Chan 46		Apt Elev	1009

ILS or LOC RWY 29

WORCESTER RGNL (ORH)

DME required.

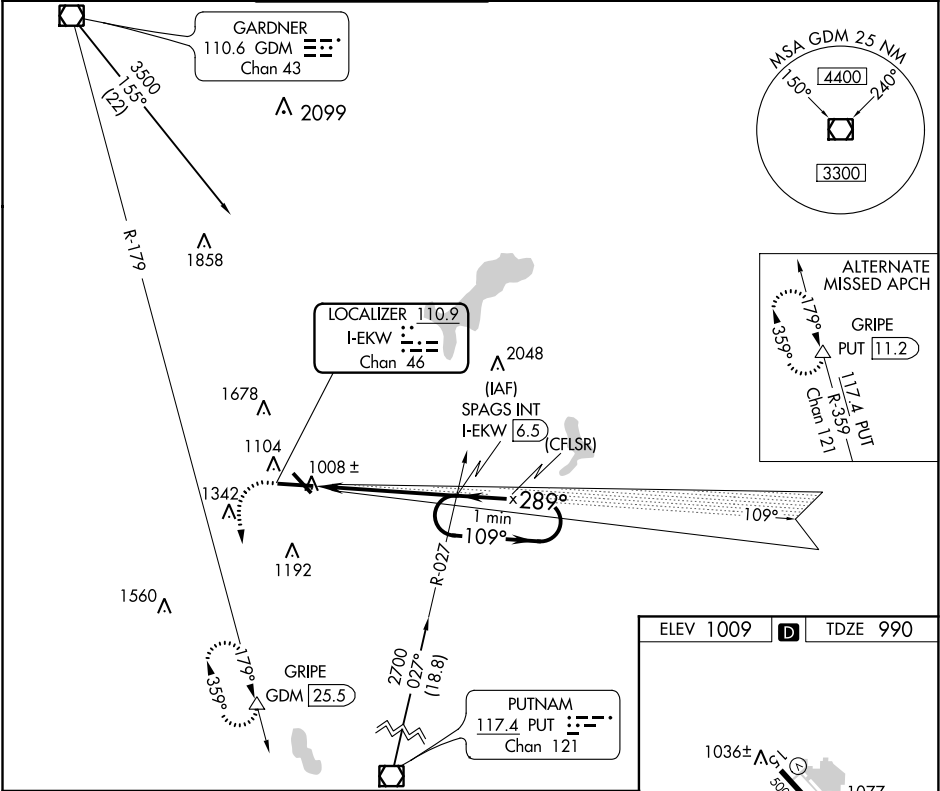
▼

▲

VDP NA with Bedford altimeter setting. When local altimeter setting not received, use Bedford altimeter setting and increase all DA 189 feet and all MDA 200 feet; increase S-ILS all Cats visibility to 1¼ SM, increase S-LOC Cats C/D visibility to 1¼ SM, and Circling Cat B to 1¼ SM. Autopilot coupled approach NA below 1266 feet.

MISSED APPROACH: Climb to 1600 then climbing left turn to 3000 on heading 240° and on GDM VOR/DME R-179 to GRIPE/GDM 25.5 DME and hold.

ATIS	YANKEE APP CON	WORCESTER TOWER★	GND CON	CLNC DEL	CLNC DEL	UNICOM
126.55	119.0 327.1	120.5 (CTAF) 0 263.0	123.85	128.65	119.0 (When twr closed)	122.95



1600	3000	GDM	GRIPE	SPAGS INT	One Minute Holding Pattern
hdg 240°	R-179			I-EKW 6.5	
*LOC only.	I-EKW 1.3	*I-EKW 2.3		2700	
				109°	2700
				289°	2700
				GS 3.00°	TCH 54
				1.1 NM	4.2 NM
CATEGORY	A	B	C	D	
S-ILS 29		1190/40	200 (200-¾)		
S-LOC 29		1380/55	390 (400-1)		
CIRCLING	1560-1 551 (600-1)	1720-1 711 (800-1)	2000-3	991 (1000-3)	

