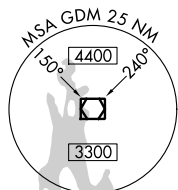


ILS or LOC RWY 11
WORCESTER RGNL (ORH)

ALSF-2

MISSED APPROACH: Climb to 1800 then climbing right turn to 3000 on heading 230° and GDM VOR/DME R-167 to LAWNR/GDM 23 DME and hold, continue climb-in-hold to 3000.

ATIS 126.55	YANKEE APP CON 119.0 327.1	WORCESTER TOWER ★ 120.5 (CTAF) 0 263.0	GND CON 123.85	CLNC DEL 128.65	CLNC DEL 119.0 (When twr closed)	UNICOM 122.95
-----------------------	--------------------------------------	--	--------------------------	---------------------------	---	-------------------------

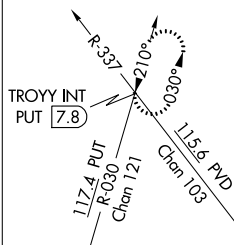


GARDNER
110.6 GDM   
Chan 43

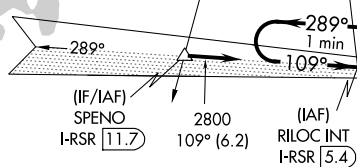
© 2009




Procedure NA for arrival
on GDM VOR/DME airway
radials 179 CW 246.

ALTERNATE MISSED
APCH FIX

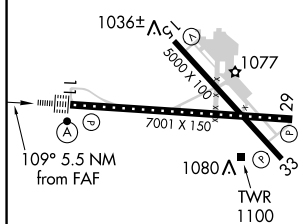


Procedure NA for arrivals
at SPENO on V229
southwest bound and
on V270 westbound.

2048
Δ

LOCALIZER 110.9
I-RSR  
Chan 46 

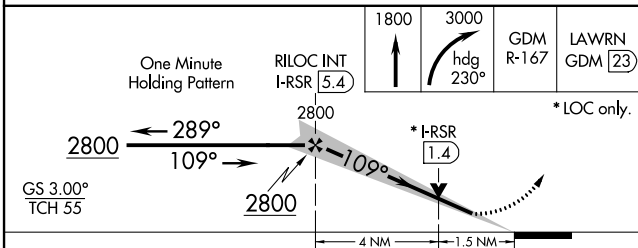
ELEV 1009	D	TDZE 980
-----------	----------	----------




TDZ/CL Rwy 11
REIL Rwy 15, 29 and 33 **L**
HIRL Rwy 11-29 **L**
MIRL Rwy 15-33 **L**

FAF to MAP 5.5 NM

Knots	60	90	120	150	180
Min:Sec	5:30	3:40	2:45	2:12	1:50



CATEGORY	A	B	C	D
S-ILS 11	1180/18		200 (200-½)	
S-LOC 11	1500/24	520 (500-½)	1500/55	520 (500-1)
 CIRCLING	1560-1 551 (600-1)	1720-1 711 (800-1)	2000-3	991 (1000-3)

NE-1, 31 DEC 2020 to 28 JAN 2021