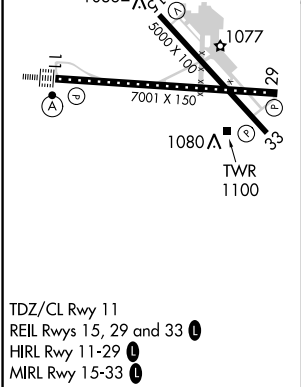
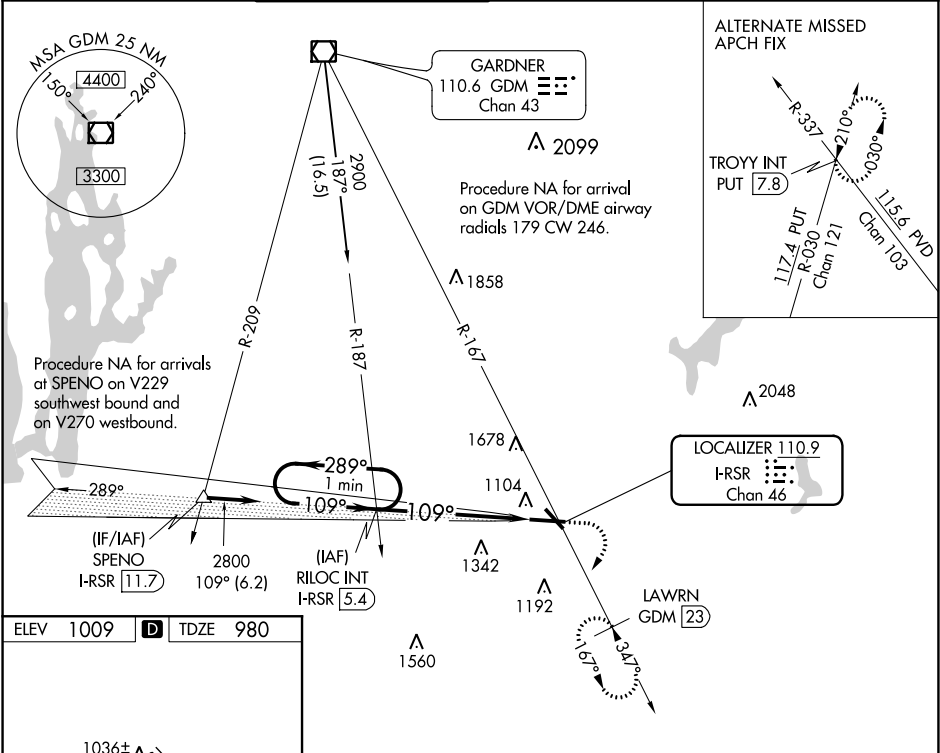


LOC/DME I-RSR	APP CRS	Rwy ldg	7001
110.9	109°	TDZE	980
Chan 46		Apt Elev	1009

ILS RWY 11 (CAT II & III)
WORCESTER RGNL (ORH)

<p>▼ DME required. CAT II: RVR 1000 authorized with specific OPSPEC, MSPEC, or LOA approval and use of autoland or HUD to touchdown. Procedure NA when tower closed.</p>	ALSF-2	MISSED APPROACH: Climb to 1800 then climbing right turn to 3000 on heading 230° and GDM VOR/DME R-167 to LAWNRN/GDM 23 DME and hold, continue climb-in-hold to 3000.
--	--------	--

ATIS	YANKEE APP CON	WORCESTER TOWER ★	GND CON	CLNC DEL	CLNC DEL	UNICOM
126.55	119.0 327.1	120.5 (CTAF) 263.0	123.85	128.65	119.0 (When twr closed)	122.95



<div><div><div>One Minute Holding Pattern</div><div>RILOC INT I-RSR 5.4</div></div><div><div>1800</div><div>3000</div><div>hdg 230°</div></div><div><div>GDM R-167</div><div>LAWRN GDM 23</div></div></div>				
<div><div><div>2800</div><div>289°</div><div>109°</div><div>2800</div><div>GS 3.00° TCH 55°</div></div><div><div>2800</div><div>1080</div><div>IM</div><div>5.5 NM</div><div>1057°</div></div></div>				
CATEGORY	A	B	C	D
S-ILS 11	CAT II RA 119/12 100 DA 1080			
S-ILS 11	CAT III RVR 06			
CATEGORY II & III ILS - SPECIAL AIRCREW & AIRCRAFT CERTIFICATION REQUIRED				

NE-1, 31 DEC 2020 to 28 JAN 2021

NE-1, 31 DEC 2020 to 28 JAN 2021